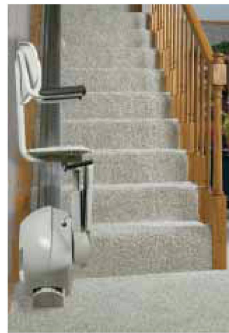
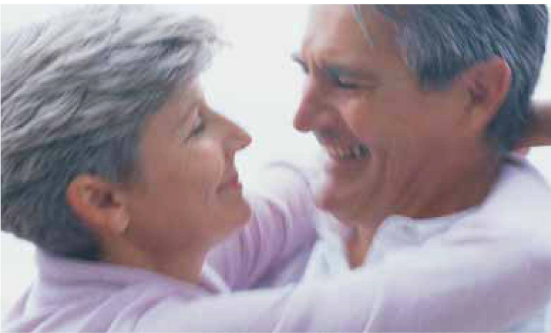


Citia now available in both A/C and battery operated systems.

Citia™ Stair Lifts

The first true innovation in stair lifts in over 50 years.

Available in both A/C and BOS (battery operated) systems



ThyssenKrupp Access

Accessibility Division



ThyssenKrupp

Caution: Stair lift will cause convenience.

ThyssenKrupp Access' exemplary history of innovation continues with the launch of the Citia stair lift. Two years in development, the Citia encapsulates over a half century of experience into an evolutionary new design offering you a truly refreshing stair lift for your home.

Flexibility built into the design.

The Citia is the only stair lift on the market that offers a choice of two drive systems and five interchangeable seats. Choose the drive system: A/C or battery operated (BOS). Choose the seat. You simply select the Citia model that best suits your needs, budget and lifestyle.

Easy care and whisper quiet operation.

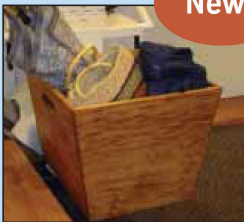
You'll appreciate the Citia's quiet motor, its smooth onset of movement and fluid finish. The track has a narrow, low profile and is easy to keep clean. The Citia is designed for straight staircases.

Why a stair lift?

The better question is why not a stair lift? The stair lift is a home appliance that adds safety, peace of mind and convenience. Most importantly, it will enhance your self-reliance and allow you to remain in your home longer and more comfortably. It is the easiest and least expensive way to go up and down stairs and requires no structural changes to your home to install.

Citia Shuttle

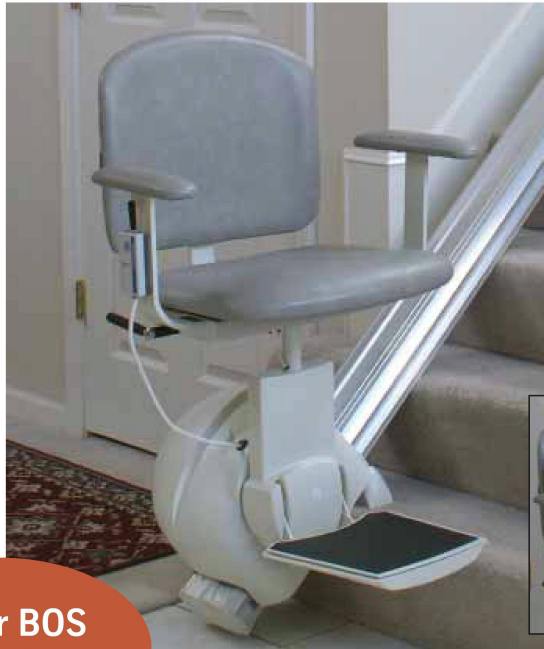
No more juggling two pairs of shoes, four books and the laundry, up the stairs. Place the whole load into the Citia Shuttle and send it up. Wooden box is designed to carry up to 50 lbs and hooks directly onto your Citia. Choice of cherry or unfinished.



New!

Seating choices

Five interchangeable seating options are available on the Citia stair lift. Choose the seat that best meets your needs.



Citia Silver

- 375 lb. lifting capacity
- Contoured seat back
- Folding seat bottom with 21" wide seat
- Fixed, straight arm rests
- Folding footrest
- Upholstery: taupe or misty gray vinyl, oatmeal herringbone fabric



**A/C or BOS
drive systems.**



Citia Excel

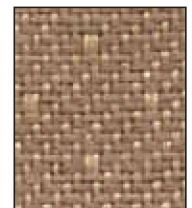
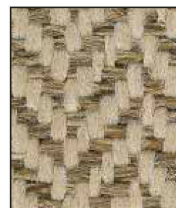
- 300 lb. lifting capacity
- Contoured seat back
- Folding seat bottom with 18" wide seat
- Independently folding arms
- Folding footrest
- Upholstery: taupe or misty gray vinyl, oatmeal herringbone fabric



Upholstery choices (varies by seat)

Silver and Excel

Select and StandardPlus



Taupe vinyl

Misty gray vinyl

Oatmeal herringbone fabric

Tan vinyl

Desert sand fabric

Citia features

- **Stair shape:** Straight
- **Speed:** 19 fpm (.10 ms)
- **Travel:** 32' max. (9.75m) (track length)
- **Incline limits:** 25° to 45° (and up to 55° with local jurisdiction approval)
- **Drive System:** Rack and pinion
- **Brake:** Self-locking worm gear
- **Motor:** .5 hp, 24 VDC with self-locking drive system, reversible
- **Power Supply:** 115 VAC, 60 Hz, 3-wire grounded outlet
- **Control System:**
 - Option 1)** A/C with SoftStart/SoftStop control board with diagnostic LED's
 - Option 2)** Battery Operated System (BOS) with SoftStart/SoftStop control board with diagnostic LED's with two 12-volt maintenance free batteries. Integrated charge stations at top and bottom, charge fault alarm, low battery indication through audible alarm, reduced speed and LED indication
- **Controls:** Constant pressure handheld pendant control (with pendant holster) and 2 wireless remote controls (infra-red).
- **Unit depth:** 14¹/₂" folded, 25¹/₄" unfolded
- **Seat choices:** Citia Standard, Citia StandardPlus, Citia Select, Citia Excel, Citia Silver
- **Seat and footrest height:** Seat height is infinitely adjustable within a 3" range. See illustration and chart on page 4 for dimensions for specific seats.
- **Track:** 5¹/₂" wide extruded aluminum with natural aluminum finish
- **Track Length:** 16' stock or custom cut
- **Safety Devices:** Footrest obstruction sensor swivel seat cut-off switch, final limits, seat belt
- **Listing:** ETL and cETL Listed
- **Warranty:** Five years on drive train and two years on all component parts



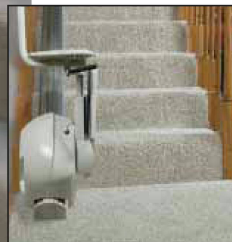
Citia Select

- 300 lb. lifting capacity
- Curved seat back
- Folding seat bottom with 18" wide seat
- Fixed, straight arm rests
- Folding footrest
- Upholstery: tan vinyl or desert sand fabric



Citia StandardPlus

- 300 lb. lifting capacity
- Curved seat back
- Fixed seat bottom with 18¹/₄" wide seat
- Fixed arm rests
- Folding footrest
- Upholstery: tan vinyl or desert sand fabric



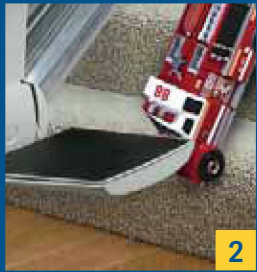
Citia Standard

- 300 lb. lifting capacity
- High impact polymer seat back
- Fixed seat bottom with 18¹/₄" wide seat
- Fixed arm rests
- Folding footrest
- Unupholstered

Specifications and/or colors subject to change without notice.



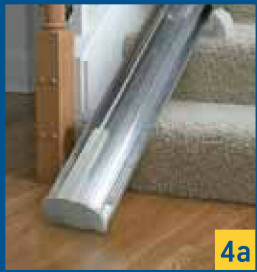
1



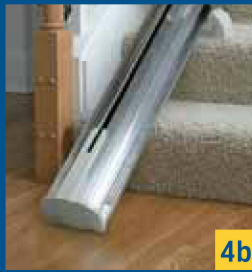
2



3



4a



4b



5

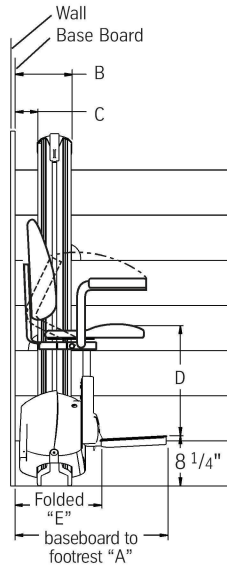


6

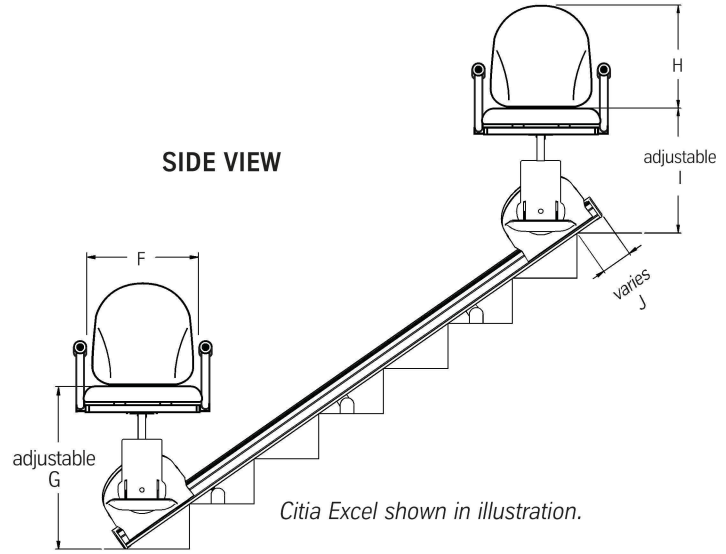
1. Citia: A/C or battery operated (BOS) track and drive system for straight-run stair lifts.
2. Obstruction sensor: lift detects something in its path and automatically stops so you can remove it.
3. Compact design: footrest folds up when unit is not in use.
- 4a. BOS Track: easy care, fully enclosed structure with integrated charge stations and mounting covers.
- 4b. A/C Track: easy care, partially enclosed structure with mounting covers.
5. Swivel seat: lever release allows seat to swivel and lock at 70° and 90° at both levels thus allowing rider to safely exit.
6. Controls: constant pressure handheld pendant control with wireless call/sends. Now includes pendant holster attached to seat (see picture on cover).

Dimensions

END VIEW

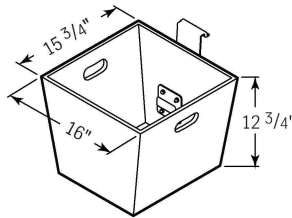


SIDE VIEW



	Standard	StandardPlus	Select	Excel	Silver
A	25 1/4"	25 1/4"	25 1/4"	25 1/4"	27 3/4"
B	8 3/4"	8 3/4"	8 3/4"	8 3/4"	11 1/4"
C	3 1/4"	3 1/4"	3 1/4"	3 1/4"	5 3/4"
D	14 1/4-17 1/4"	14 1/4-17 1/4"	15 3/4-18 3/4"	15 1/2-18 1/2"	15 1/2-18 1/2"
E	15 1/4"	15 1/4"	15 1/4"	15 1/4"	17 3/4"
F	18 1/4"	18 1/4"	18"	18"	21"
G	23-26"	23-26"	24-27"	23 3/4-26 3/4"	23 1/2-26 1/2"
H	15"	15"	18"	17"	15"
I	15 1/2-18 1/2"	15 1/2-18 1/2"	17 1/2-20 1/2"	17 1/2-20 1/2"	17-20"
J	5/8" (min.)	5/8" (min.)	5/8" (min.)	5/8" (min.)	1 1/2" (min.)

Specifications and/or colors subject to change without notice.



Citia Shuttle

(fits on the following seats: Citia Silver, Citia Excel and Citia Select)

Manufactured in USA since 1947.



Independent Mobility Solutions.com
 440 Getty Avenue, Clifton, NJ 07011
 973.478.9219