

ALPHA TIRE SYSTEMS

OTR Loader & Earthmover

OTR Loader & Earthmover Tire Specification Sheets Form Spec. ATS2003-1 3-Dec-02 Page 6 of 28

Cat.#	Size/PR/Type	Design	Stand . Rim	Approved Rim	Max. Load lbs	Infl. psi/bar	Unloaded		Load Static Radius	Tire Wt. lbs	Tread Depth
							Infl. Dim. Sect. Overl Width II Dia.	ins			
Alpha Brand Loader L-2/E-2 Bias Tires DIRT MAULER SUP'R SIDEWALL											
115252	15.5-25/12TL	Alpha L-2 DIRT MAULER	12.00	12.00DC	12300	58/4.00	15.50	50.30	22.20	202.40	25/32
115256	15.5-25/16TL	Alpha L-2 DIRT MAULER	12.00	12.00DC	13600	69/4.75	15.50	50.30	22.20	216.92	25/32
117252	17.5-25/12TL	Alpha L-2 DIRT MAULER	14.00	14.00DC	13600	51/3.50	17.50	53.08	23.50	280.94	30/38
117256	17.5-25/16TL	Alpha L-2 DIRT MAULER	14.00	14.00DC	16100	69/4.75	17.50	53.08	23.50	295.90	30/38
117250	17.5-25/20TL	Alpha L-2 DIRT MAULER	14.00	14.00DC	18200	83/5.75	17.50	53.08	23.50	310.20	30/38
120252	20.5-25/12TL	Alpha L-2 DIRT MAULER	17.00	17.00AL	14800	36/2.50	20.50	58.76	25.70	369.60	28.5/36
120256	20.5-25/16TL	Alpha L-2 DIRT MAULER	17.00	17.00AL	18200	51/3.50	20.50	58.76	25.70	386.32	28.5/36
120250	20.5-25/20TL	Alpha L-2 DIRT MAULER	17.00	17.00AL	20900	65/4.50	20.50	58.76	25.70	402.38	28.5/36
123252	23.5-25/12TL	Alpha L-2 DIRT MAULER	19.50		17600	33/2.25	23.50	63.68	28.00	483.56	30.5/39
123256	23.5-25/16TL	Alpha L-2 DIRT MAULER	19.50		20900	44/3.00	23.50	63.68	28.00	504.02	30.5/39
123250	23.5-25/20TL	Alpha L-2 DIRT MAULER	19.50		24000	54/3.75	23.50	63.68	28.00	524.70	30.5/39



**Loader L-2/E-2
DIRT MAULER**

ALPHA TIRE SYSTEMS

OTR Loader & Earthmover

OTR Loader & Earthmover Tire Specification Sheets Form Spec. ATS2003-1 3-Dec-02 Page 7 of 28

Cat.#	Size/PR/Type	Design	Stand. Rim	Approved Rim	Max. Load	Infl.	Unloaded		Load	Tire Wt.	Tread Depth
							Infl. Dim.	Static Radius			
					lbs	psi/bar	ins	ins	ins	lbs	mm/32NDS
Alpha Brand Earthmover L-3/E-3 Bias Tires ROCK MAULER SUP'R SIDEWALL											
17060	14.00-24/24TT	Alpha E-3 ROCK LOADER	10.00W		11400	83/5.75	14.75	55.84	25.8	276.32	26/33
17080	16.00-24/16TL	Alpha E-3 ROCK LOADER	10.00VA		10700	46/3.20	16.80	57.46	27.30	291.94	28/35
17100	16.00-25/28TL	Alpha E-3 ROCK LOADER	11.25		14800	83/5.75	17.00	58.76	27.20	435.82	28.5/36
17101	16.00-25/32TL	Alpha E-3 ROCK LOADER	11.25		16100	94/6.50	17.00	58.76	27.20	453.42	28.5/36
17102	16.00-25/36TL	Alpha E-3 ROCK LOADER	11.25		17100	105/7.25	17.00	58.76	27.20	475.42	28.5/36
17130	18.00-25/32TL	Alpha E-3 ROCK LOADER	13.00		19300	83/5.75	19.60	63.68	29.10	553.08	30/38
17131	18.00-25/40TL	Alpha E-3 ROCK LOADER	13.00		21500	102/7.00	19.60	63.68	29.10	616.00	30/38
17150	15.5-25/12TL	Alpha E-3 ROCK LOADER	12.00	12.00DC	12300	58/4.00	15.50	50.30	22.90	217.80	25/32
17161	17.5-25/12TL	Alpha E-3 ROCK LOADER	14.00	14.00DC	13600	51/3.50	17.50	53.08	24.20	280.94	30/38
17160	17.5-25/16TL	Alpha E-3 ROCK LOADER	14.00	14.00DC	16100	69/4.75	17.50	53.08	24.20	295.90	30/38
17162	17.5-25/20TL	Alpha E-3 ROCK LOADER	14.00	14.00DC	18200	83/5.75	17.50	53.08	24.20	310.20	30/38
17190	20.5-25/16TL	Alpha E-3 ROCK LOADER	17.00	17.00AL	18200	51/3.50	20.50	58.76	26.50	403.70	32/41
17192	20.5-25/20TL	Alpha E-3 ROCK LOADER	17.00	17.00AL	20900	65/4.50	20.50	58.76	26.50	419.76	32/41
17195	20.5-25/50TL	Alpha E-3 ROCK LOADER	17.00	17.00AL	35000	218/15.00	20.50	58.76	26.50	693.00	32/41
17220	23.5-25/16TL	Alpha E-3 ROCK LOADER	19.50		20900	44/3.00	23.50	63.68	29.00	531.74	35/44
17222	23.5-25/20TL	Alpha E-3 ROCK LOADER	19.50		24000	54/3.75	23.50	63.68	29.00	554.84	35/44
17256	26.5-25/28TL	Alpha E-3 ROCK LOADER	22.00		34200	69/4.75	26.50	68.90	30.30	834.46	38/48
17350	29.5-25/22TL	Alpha E-3 ROCK LOADER	25.00		33100	47/3.25	29.50	73.76	32.30	1062.60	41.0/52
17351	29.5-25/28TL	Alpha E-3 ROCK LOADER	25.00		38600	62/4.25	29.50	73.76	32.30	1095.60	41.0/52
17360	29.5-29/22TL	Alpha E-3 ROCK LOADER	25.00		35300	47/3.25	29.50	77.76	35.0	1152.80	41.0/52
17361	29.5-29/28TL	Alpha E-3 ROCK LOADER	25.00		41900	62/4.25	29.50	77.76	35.0	1188.00	41.0/52



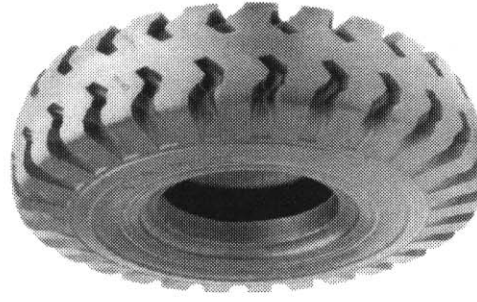
**ROCK LOADER
E-3/L-3**

ALPHA TIRE SYSTEMS

OTR Loader & Earthmover

OTR Loader & Earthmover Tire Specification Sheets Form Spec. ATS2003-1 3-Dec-02 Page 8 of 28

Cat.#	Size/PR/Type	Design	Stand. Rim	Approved Rim	Max. Load	Infl.	Unloaded		Loaded	Tire Wt.	Tread Depth
							Infl. Dim. Sect. Width	Overall Dia.			
					lbs	psi/bar	ins	ins	ins	lbs	mm/32NDS
Alpha Brand Earthmover E-4 Bias Tires Rock Mauler											
17070	14.00-24/20TT	Alpha E-4 ROCK MAULER	10.00w		10200	69/4.75	14.75	55.84	25.80	255.42	30/38
17071	14.00-24/24TT	Alpha E-4 ROCK MAULER	10.00w		11400	83/5.75	14.75	55.84	25.80	268.62	30/38
17072	14.00-24/28TT	Alpha E-4 ROCK MAULER	10.00w		12350	94/6.50	14.75	55.84	25.80	290.40	30/38
17073	14.00-24/32TT	Alpha E-4 ROCK MAULER	10.00w		13000	105/7.25	14.75	55.84	25.80	310.42	30/38
17346	18.00-25/28TL	Alpha E-4 ROCK MAULER	13.00		17600	73/5.00	19.60	65.88	30.10	756.80	53.8/68
17347	18.00-25/32TL	Alpha E-4 ROCK MAULER	13.00		19300	83/5.75	19.60	65.88	30.10	770.00	53.8/68
17348	18.00-25/36TL	Alpha E-4 ROCK MAULER	13.00		20800	94/6.50	19.60	65.88	30.10	789.80	53.8/68
17340	18.00-33/32TL	Alpha E-4 ROCK MAULER	13.00		22700	83/5.75	19.60	73.88	34.50	842.82	55/70
17370	21.00-35/36TL	Alpha E-4 ROCK MAULER	15.00		28300	80/5.50	22.50	80.78	37.20	1160.06	55/70
17371	21.00-35/36TL	E-4 ROCK MAULER OSW	15.00		28300	80/5.50	23.00	80.78	37.20	1317.80	55.0/70



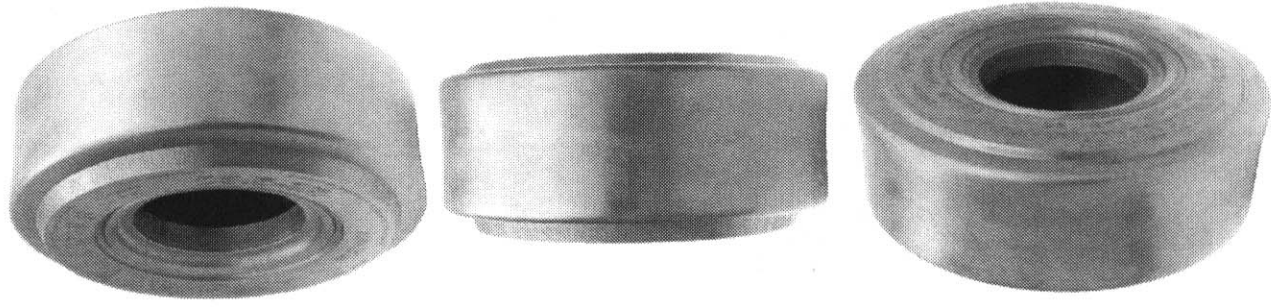
ROCK MAULER E-4

ALPHA TIRE SYSTEMS

OTR Loader & Earthmover

OTR Loader & Earthmover Tire Specification Sheets Form Spec. ATS2003-1 3-Dec-02 Page 9 of 28

Cat.#	Size/PRTY pe	Design	Stand . Rim	Approved Rim	Max. Load lbs	Infl. psi/bar	Unloaded		Load Static Radius ins	Tire Wt. lbs	Tread Depth mm/32NDS
							Inf. Dim. Sect. Width ins	Over ll Dia. ins			
Alpha Brand Smooth Rock Loader Bias Tires L-5s											
17066	12.00-20/28TL	Alpha L-5S	8.50	8.0,9.0	9050	94/6.50	12.40	46.20	21.90	382.80	89.0/112
17103	16.00-25/32TL	Alpha L-5S	11.25		27300	123/8.50	17.00	60.96	28.30	685.00	51.0/64
17104	16.00-25/40TL	Alpha L-5S	11.25		30800	138/9.50	17.00	60.96	28.30	715.00	51.0/64
17164	17.5-25/12TL	Alpha L-5S	14.00	14.00DC	13600	51/3.50	17.50	55.08	25.10	451.00	63.5/80
17165	17.5-25/16TL	Alpha L-5S	14.00	14.00DC	16100	69/4.75	17.50	55.08	25.10	465.74	63.5/80
17166	17.5-25/20TL	Alpha L-5S	14.00	14.00DC	18200	83/5.75	17.50	55.08	25.10	477.40	63.5/80
17167	17.5-25/24TL	Alpha L-5S	14.00	14.00DC	19700	94/6.50	17.50	55.08	25.10	492.14	63.5/80
17135	18.00-25/24TL	Alpha L-5S	13.00		27600	80/5.50	19.60	65.08	29.40	780.78	78.5/99
17132	18.00-25/32TL	Alpha L-5S	13.00		33100	109/7.50	19.60	65.88	29.40	821.04	78.5/99
17134	18.00-25/40TL	Alpha L-5S	13.00		37500	138/9.50	19.60	65.88	29.40	1100.88	78.5/99
17136	18.00-25/50TL	Alpha L-5S	13.00		43000	175/12.00	19.60	65.88	29.40	1155.00	78.5/99
17140	23.5-25/50TL	Alpha L-5S	19.50		51300	127/8.75	23.50	65.88	29.40	1340.00	89/112
17260	26.5-25/28TL	Alpha L-5S	22.00		34200	69/4.75	26.50	70.78	32.30	1452.00	87.5/110
17262	26.5-25/32TL	Alpha L-5S	22.00		37500	80/5.50	26.50	70.78	32.30	1476.20	87.5/110
17263	26.5-25/36TL	Alpha L-5S	22.00		38600	83/5.75	26.50	70.78	32.30	1507.00	87.5/110
17264	26.5-25/40TL	Alpha L-5S	22.00		43000	102/7.00	26.50	70.78	32.30	1512.50	87.5/110



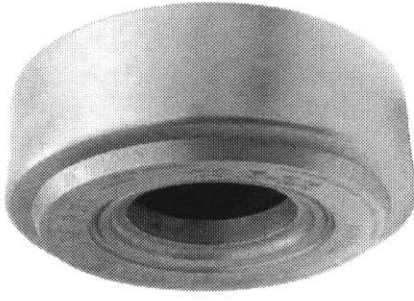
**Smooth Rock
Loader L-5s**

ALPHA TIRE SYSTEMS

OTR Loader & Earthmover

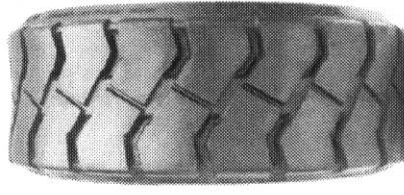
OTR Loader & Earthmover Tire Specification Sheets Form Spec. ATS2003-1 3-Dec-02 Page 10 of 28

Cat.#	Size/PR/Type	Design	Stand. Rim	Approved Rim	Max. Load	Infl.	Unloaded		Loaded	Tire Wt.	Tread Depth
							Inf. Dim.	Overl. II Dia.			
					lbs	psi/bar	ins	ins	ins	lbs	mm/32NDS
Alpha Brand Smooth Rock Mauler Transfer Station Bias Tires L-6s/L-8s											
17112	23.5-25/50TL	Alpha L-6s	19.50		51300	127/8.75	23.50	65.88	29.40	1359.60	105.0/133
17110	26.5-25/50TL	Alpha L-8s	22.00		51800	120/8.30	26.50	70.78	32.30	2244.00	105.0/133



Transfer Station

L-6s/L-8s



LAR Mine Mauler

Alpha Brand Hi-Stability LAR Low Profile Bias Tires MINE MAULER OUTSIDEWALL											
21030	50X1600-34/24	(15.5-25) LAR Mine Mauler	14.00		12300	87/6.00	16.50	50.30	23.30	343.20	24.0/30
21032	50X1600-34/42	(15.5-25) LAR Mine Mauler	14.00		26000	170/11.75	16.50	50.30	23.30	453.20	24.0/30
21040	53X1800-34/24	(17.5-25) LAR Mine Mauler	16.00		18200	97/6.75	18.90	53.08	24.60	409.64	28.0/36
21042	53X1800-34/42	(17.5-25) LAR Mine Mauler	16.00		26100	150/10.25	18.90	53.08	24.60	516.12	28.0/36
21050	57X2100-36/24	(20.5-25) LAR Mine Mauler	18.00		19500	95/6.55	21.50	58.76	27.10	578.60	30.0/38
21052	57X2100-36/50	(20.5-25) LAR Mine Mauler	18.00		36900	170/11.75	21.50	58.76	27.10	785.40	30.0/38
21060	62x2400-38/36	(23.5-25) LAR Mine Mauler	20.50		27600	105/7.25	24.90	63.68	29.60	776.60	33.0/42
21062	62x2400-38/50	(23.5-25) LAR Mine Mauler	02.50		36700	150/10.25	24.90	63.68	29.60	979.00	33.0/42
21070	68X2700-42/36	(26.5-25) LAR Mine Mauler	23.50		33500	97/6.75	27.90	68.90	31.10	1134.54	35.0/44
21072	68X2700-42/50	(26.5-25) LAR Mine Mauler	23.50		53900	170/11.75	27.90	68.90	31.10	1320.00	35.0/44
21080	63X1900-42/42	(18.00-25) LAR Mine Mauler	16.00		33100	119/8.25	19.90	63.68	29.60	803.00	30.0/38
21082	63X1900-42/50	(18.00-25) LAR Mine Mauler	16.00		42200	150/10.25	19.90	63.68	29.60	946.00	30.0/38