

RangerWare

By  POLARIS®



RZR Heater System
Part # 2878135

NOTE: This heater unit installs below the center of the dash. If you have a radio mount kit (Polaris Part # 2876897) you may need to cut the top front corner off the mount and locate it flush with the dash (Photo 7)

NOTE: Check engine coolant level often until all the air is removed from the system.

1. Remove the hood, front storage basket, seats, center console and rear panel behind the seat.
2. Drain the coolant system by removing the lower radiator hose.
3. (Photo 1) Use the template to drill and cut out the dash for the defrost vent. Check for clearance under the dash before drilling or cutting. Mount the defrost vent using the hardware provided.
4. (Photo 2) Cut out and locate the firewall template in the space between the pedal bracket and fuse panel. Drill the pilot holes $\frac{1}{4}$ ". Drill the cable hole to $\frac{5}{16}$ " and the hose outlets to $1\frac{3}{8}$ ". Install the grommets in the hose outlets. (Lube the grommets to make the hose installation easier)
5. (Photo 3) ((Retain all parts for reinstallation)) Remove the 3 torx screws securing the plastic panel behind the passenger seat. Remove the thermostat housing from the engine. Remove the coolant hose from the housing and cut $2\frac{1}{4}$ " off the hose.
6. (Photo 3) , & Diagram "A" Install the adaptor, gaskets, thermostat and housing as shown in Diagram "A" using the longer bolts supplied. Reconnect the coolant hose to the housing with the tabs on the clamps pointing down. Use a hose clamp to connect a 84 " piece of $\frac{3}{4}$ " hose to the outlet on the thermostat adaptor. Route the hose forward following the drive shaft to the area in front of the firewall. Replace the 3 torx screws removed earlier. Install the center rear plastic panel (make sure the hose does not pinch on the passenger side). Use wire ties to secure the hose to the factory coolant lines and frame as necessary to keep clear of the drive shaft.
7. (Photo 4) Locate the "Tee" in the lower radiator hose (locate from passenger front wheel area). Cut the hose 3" behind the Tee and install the 1 " x 1 " x $\frac{3}{4}$ " Tee as shown. Connect a 24 " piece of $\frac{3}{4}$ " hose and route thru the top Grommet in the firewall. Allow 5 " to extend thru the firewall and loosely place a hose clamp on the hose.
8. (Photo 5) Position the heater below the center of the dash as shown. Extend the control cable and lower hose from the heater thru the firewall. Slide the top hose (with clamp) on to the upper heater core outlet. Secure the heater to the round dash support tube using the u-bolts and flange nuts. Tighten the hose clamps.
9. (Photo 6) Install the control valve (face up 45 degrees toward the driver side) in the lower hose coming from the heater (flow arrow points toward the heater). With the valve in the "off" position and the control knob pushed "in" loop the control cable end over the valve pin and secure the cable clamp. Connect the hose coming from the engine to the valve. Tighten all hose clamps.

10. Route the duct hose from the defrost vent to the center outlet on the heater and secure with wire ties. Place the (2) directional vents on the outside outlets on the heater.
11. Bolt the ground wire to the dash brace using a 1/4" x 3/4" bolt and nut. Hook the red wire with the bullet terminal to the accessory bullet terminal located in the wire bundle leading to the accessory outlet in the dash. Secure wiring with wire ties as needed. Operate the switch to check the blower (Key On).
12. Check and tighten all hose clamps. Check hose routing and secure away from moving parts.
13. Remove the radiator cap and push the heater control knob to the on position. Fill the radiator with coolant. Start and run the engine while filling the radiator as air bleeds out (3 minutes) Replace the cap, check for leaks and run the engine for several minutes. Check the heater function by turning the blower on and feeling for warm air. Turn engine off and allow to cool. Refill radiator as necessary.
14. Replace storage basket, center console, hood and seats.
15. Replace the WARNING decal with the new one provided. Place the decal forward of the defrost vent. (Between Defrost Vent & Windshield.

Ranger *Ware*

By

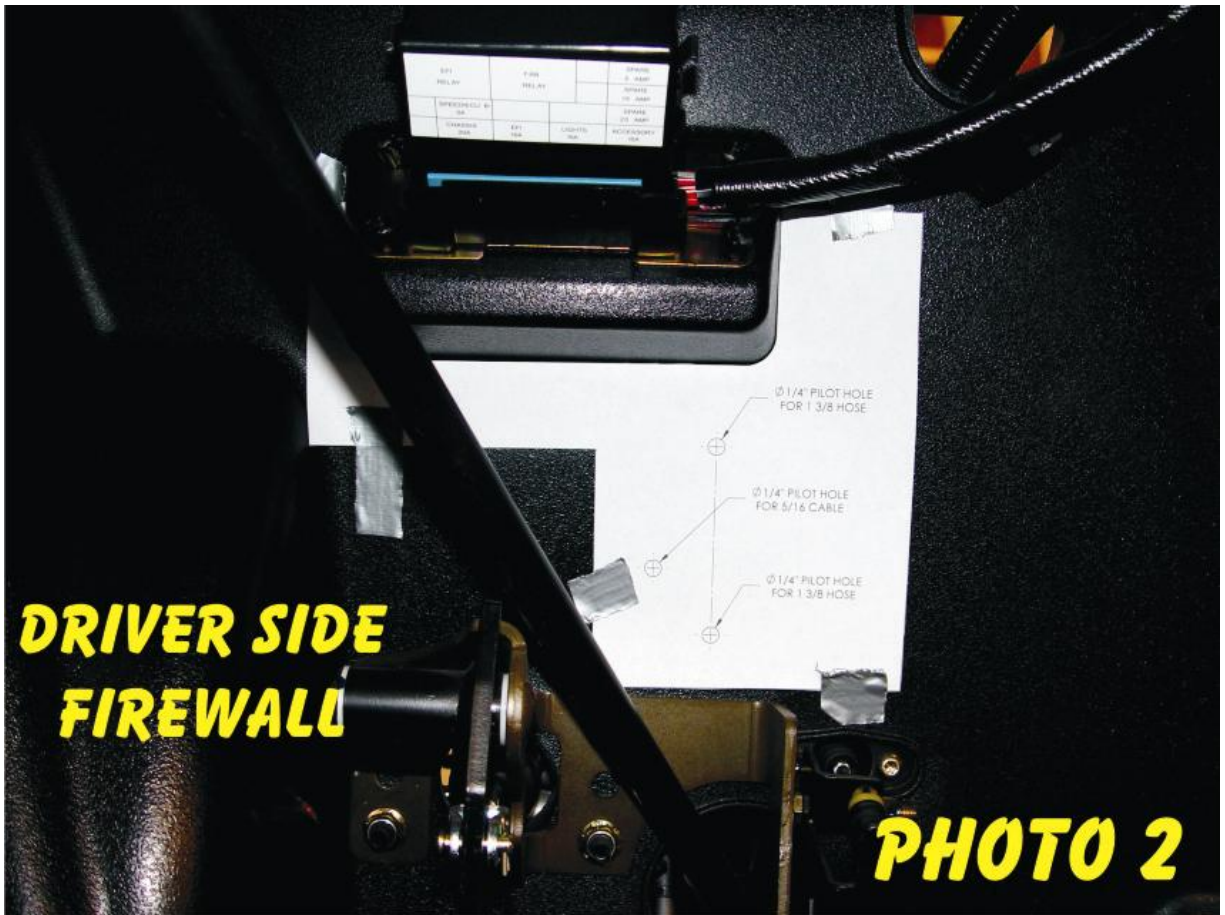


POLARIS®

**DRIVER SIDE DASH
DEFROST VENT TEMPLATE**

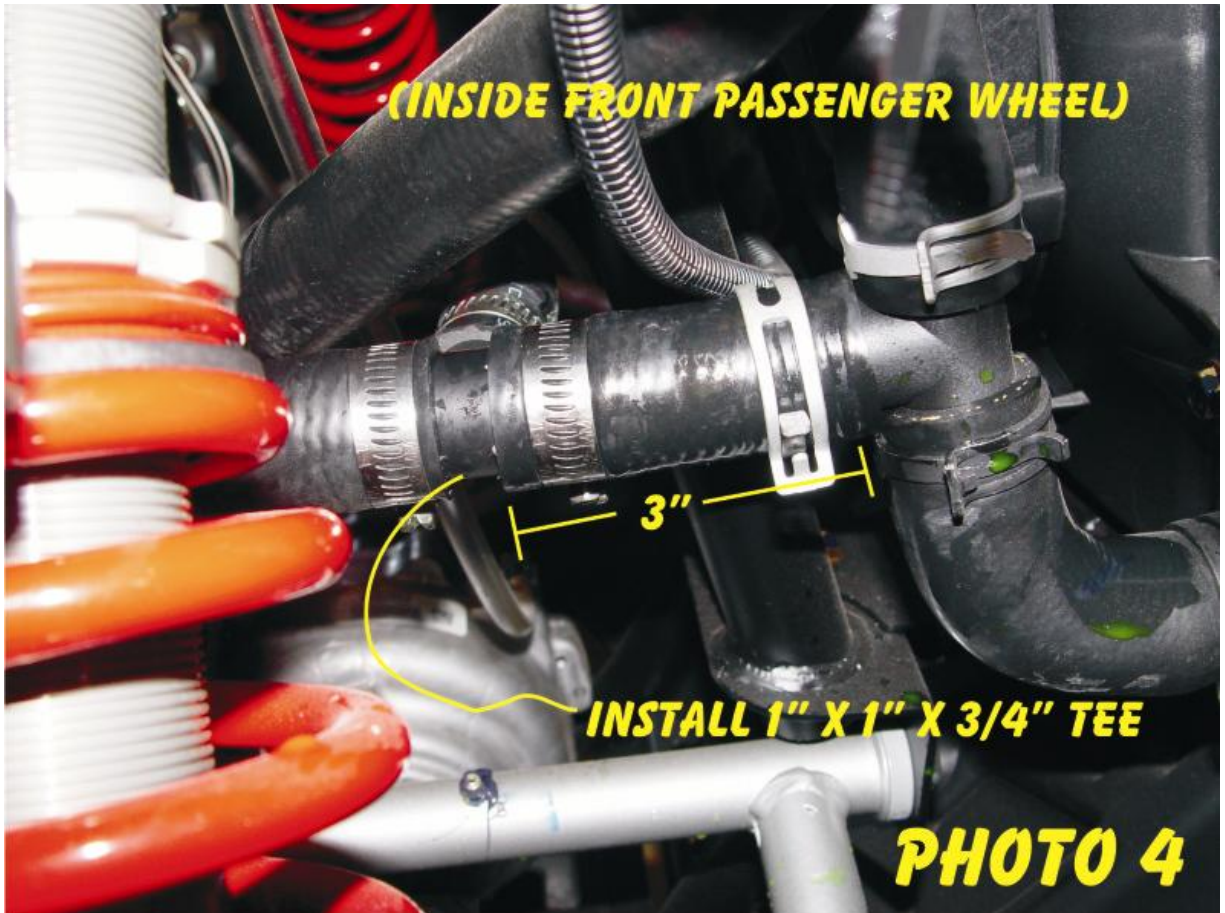
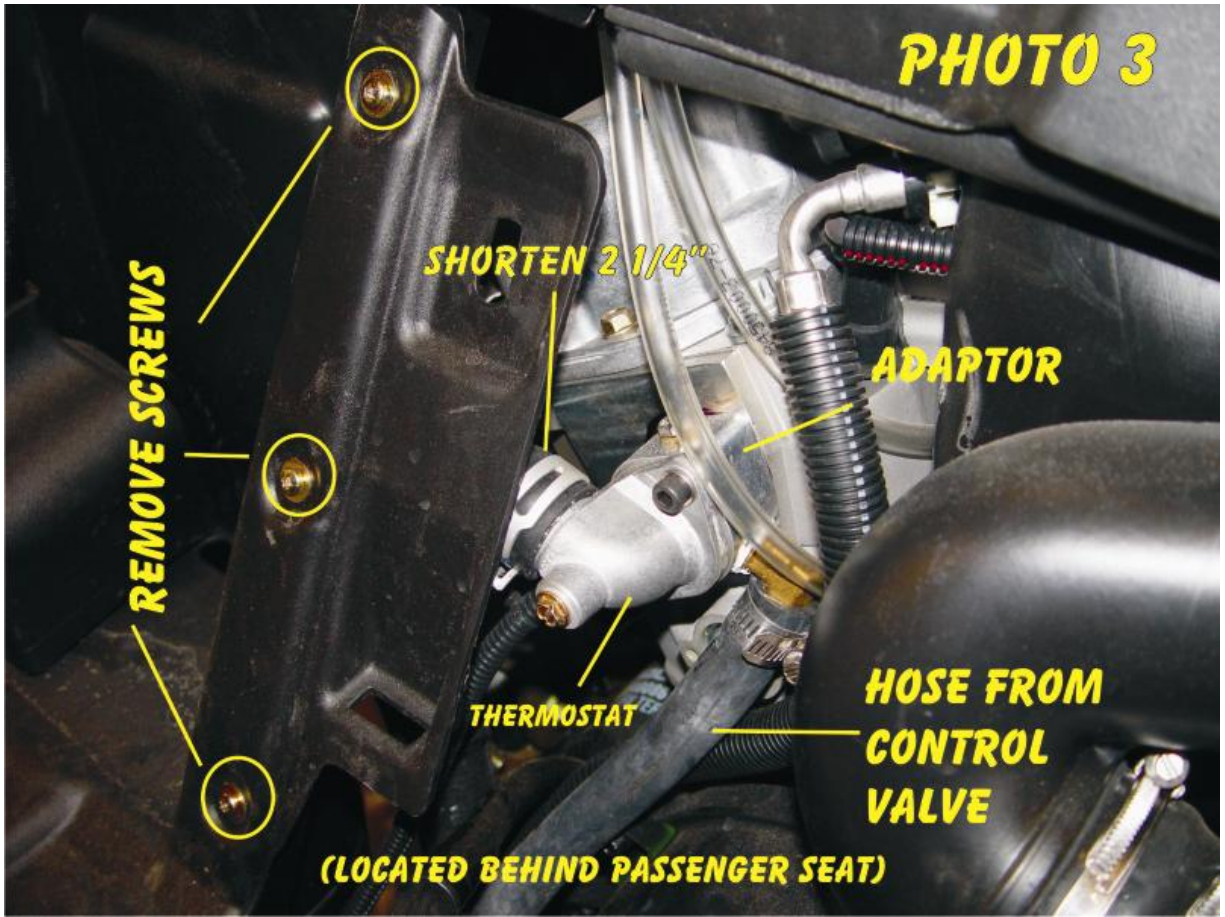


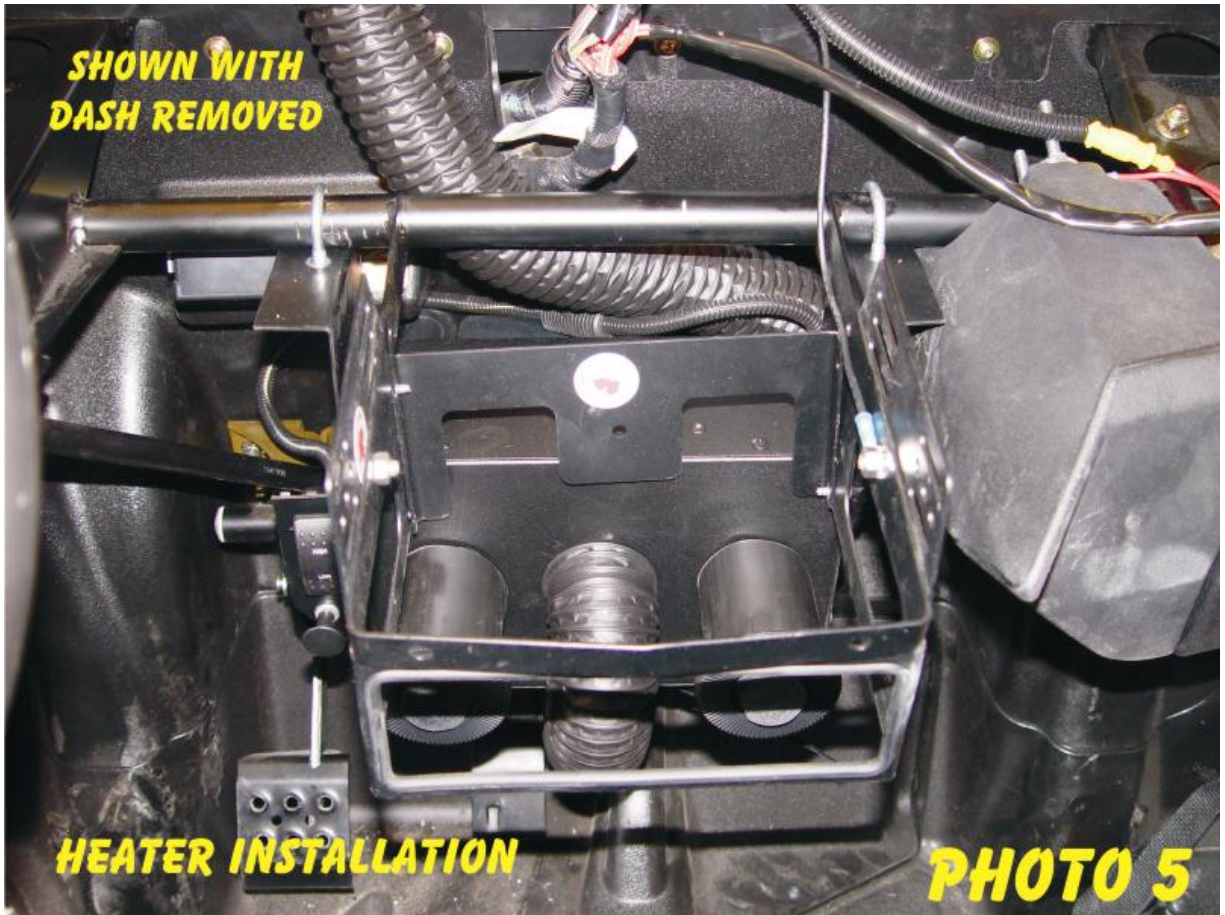
PHOTO 1

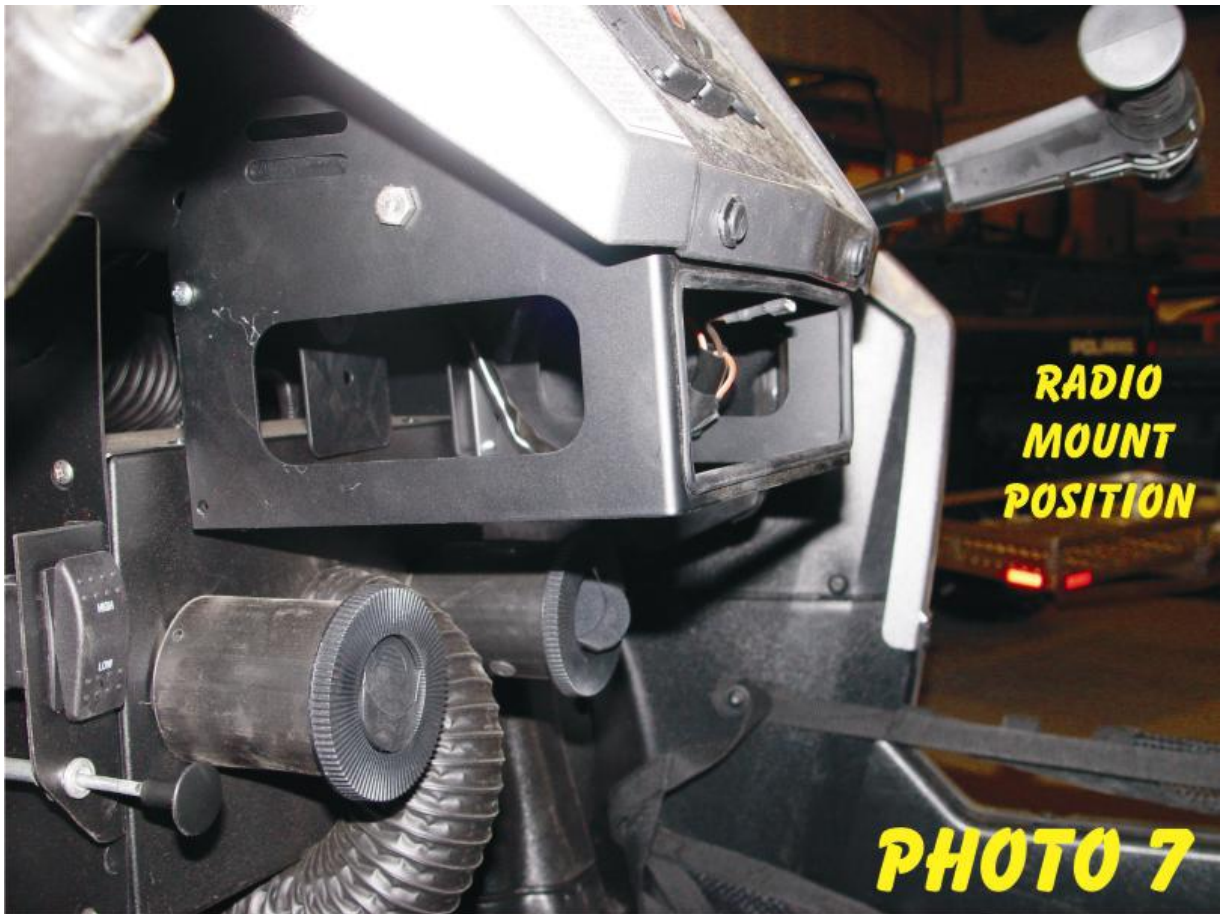


**DRIVER SIDE
FIREWALL**

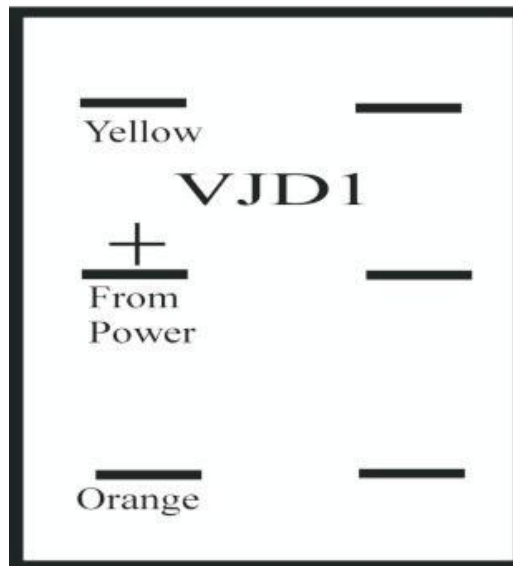
PHOTO 2



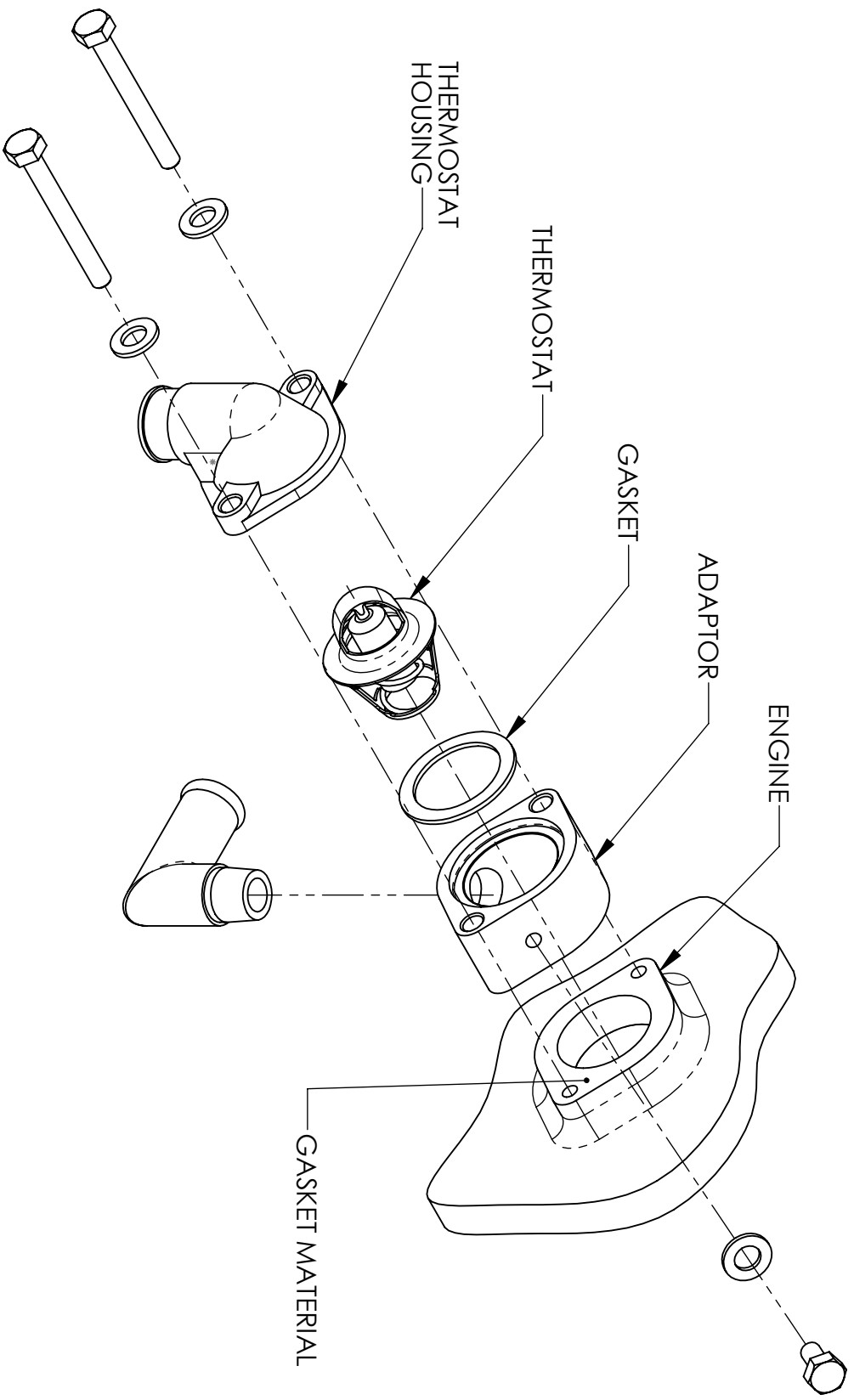




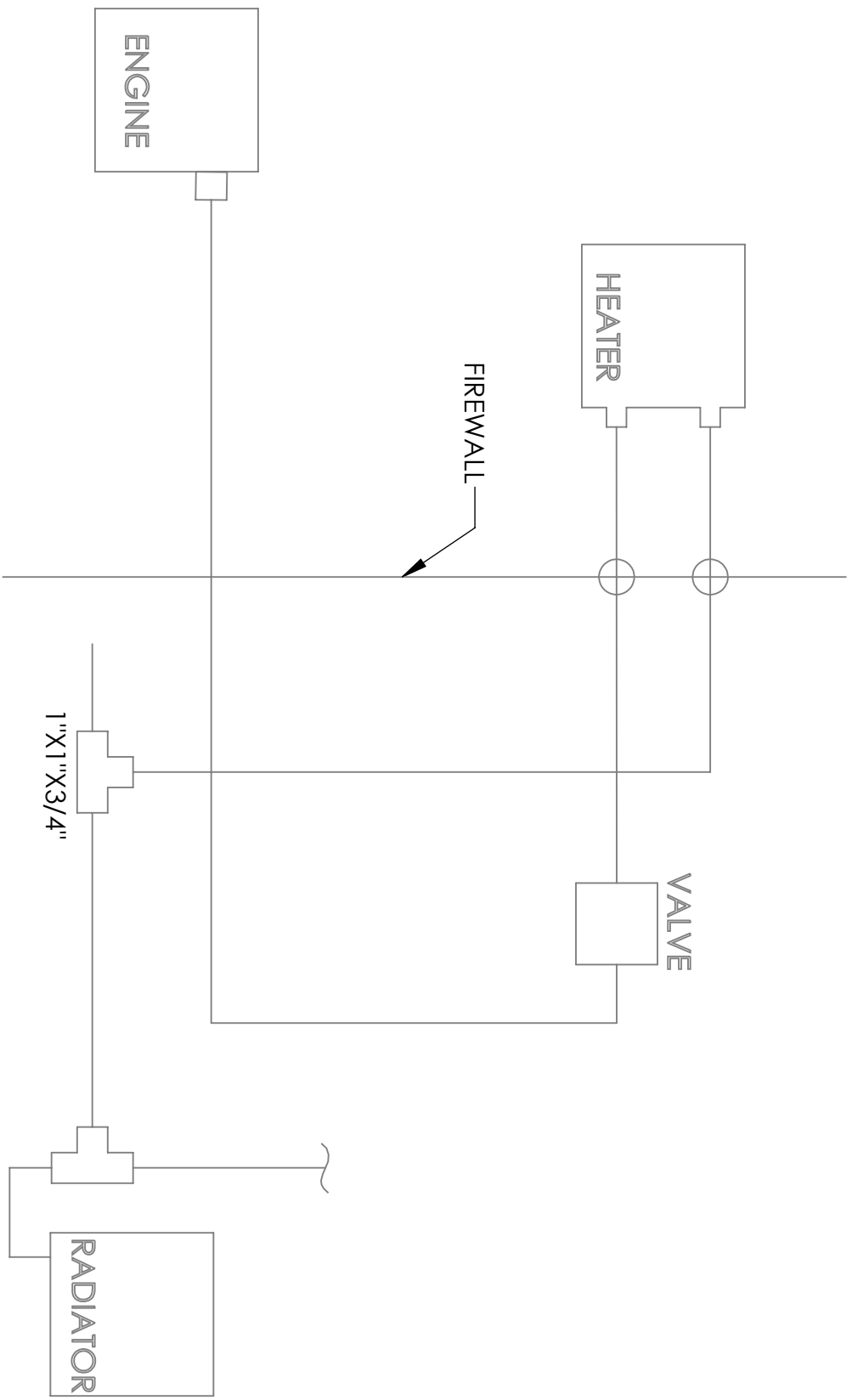
Back of Switch



Red from heater is Medium and won't be used.
Black from heater is Ground

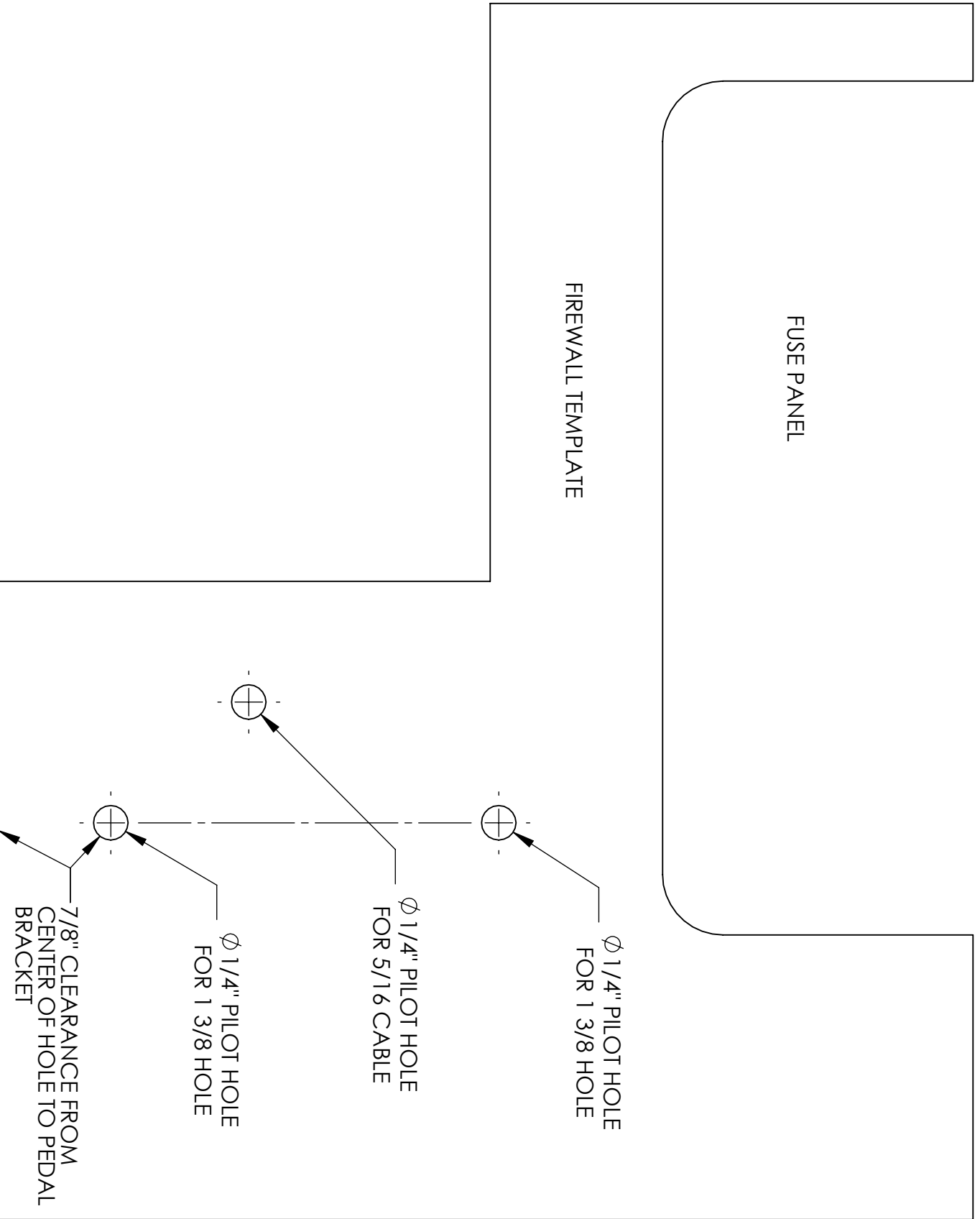


09 HEATER HOSE ROUTING SCHEMATIC

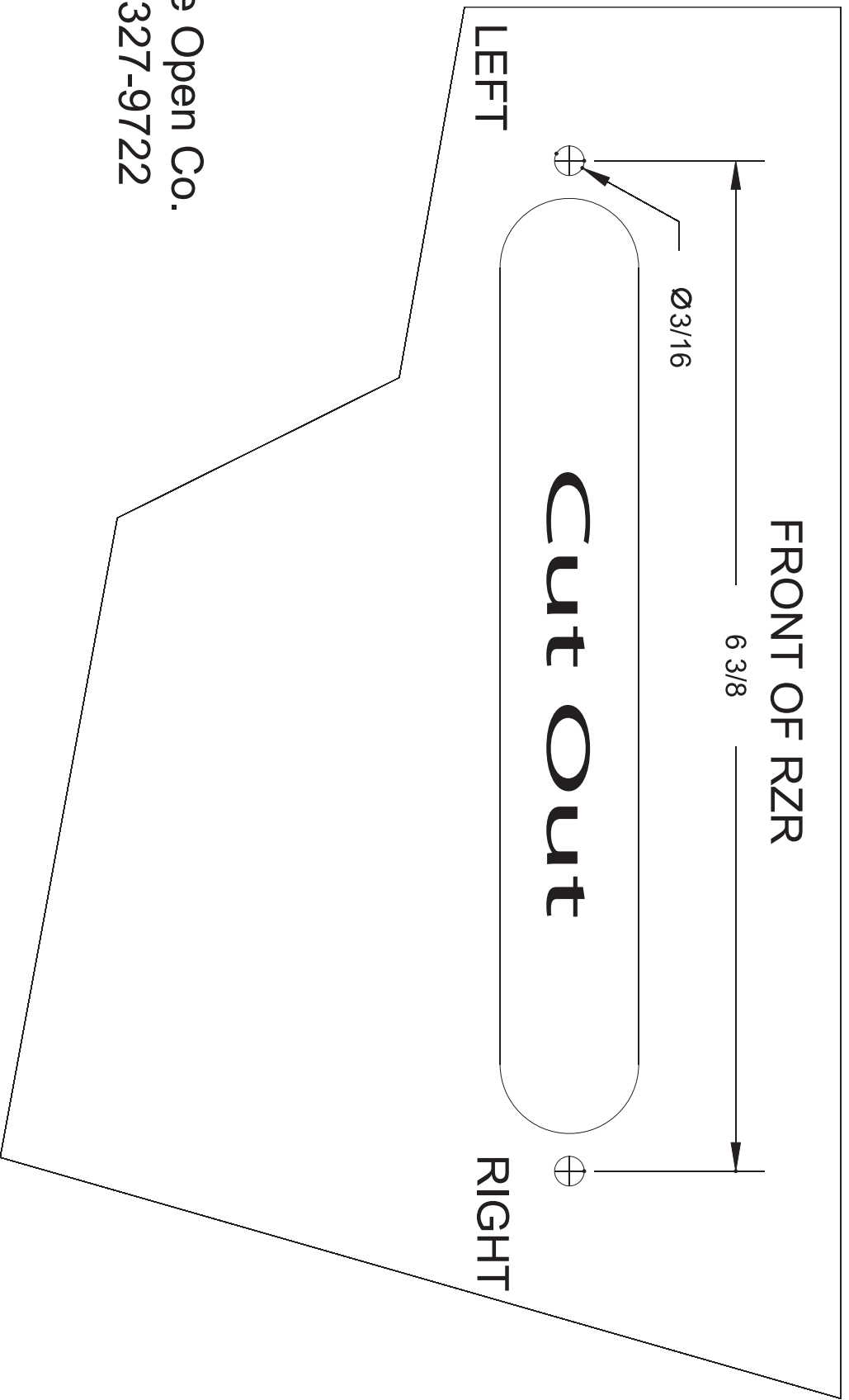


FUSE PANEL

FIREWALL TEMPLATE



RZR Defrost Template



Wide Open Co.
218-327-9722