



# E-Tire Link

## Contents

- ❖ General overview
- ❖ Updates done 11/11/08
- ❖ Page layouts
- ❖ E Tire Link things to remember
- ❖ Placing an order

## General Overview

E Tire Link is Free Service Tires interactive web site for our wholesale customers. Users of E Tire Link can easily search for inventory, place orders online, view your account payments, view pictures of some products and much more.

## Page Layouts

E Tire Link consists of one main, the “**order entry**” page, most of what you will do begins at this page.

There are also several other pages that you will also be using that work with the “**order entry**” page. These are:

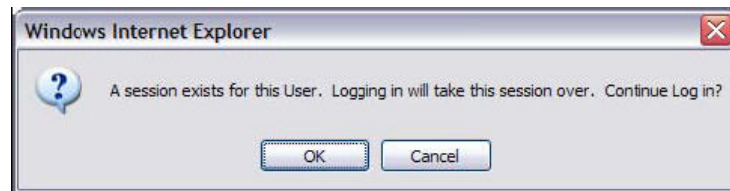
- ❖ Changes that were made 11/11/08
- ❖ Login screen
- ❖ Order Entry screen
- ❖ Inventory screen
- ❖ Order Lookup screen
- ❖ Backorders
- ❖ Account
- ❖ Help
- ❖ Ship To (not used)

## Changes to eTireLink Effective 11/11/08

When eTireLink comes back up on the afternoon of 11/11/08, the following changes will be in place:

1. eTireLink will be a single window application. This means that instead of opening a new window when they log in and another window for each additional screen (Inventory Inquiry, Order Inquiry, etc) the current window will change as they move through eTireLink.
2. The Login process will be simplified. If a user did not properly log out of eTireLink during their last session, they will receive a pop-up window alerting them.

New popup alert:



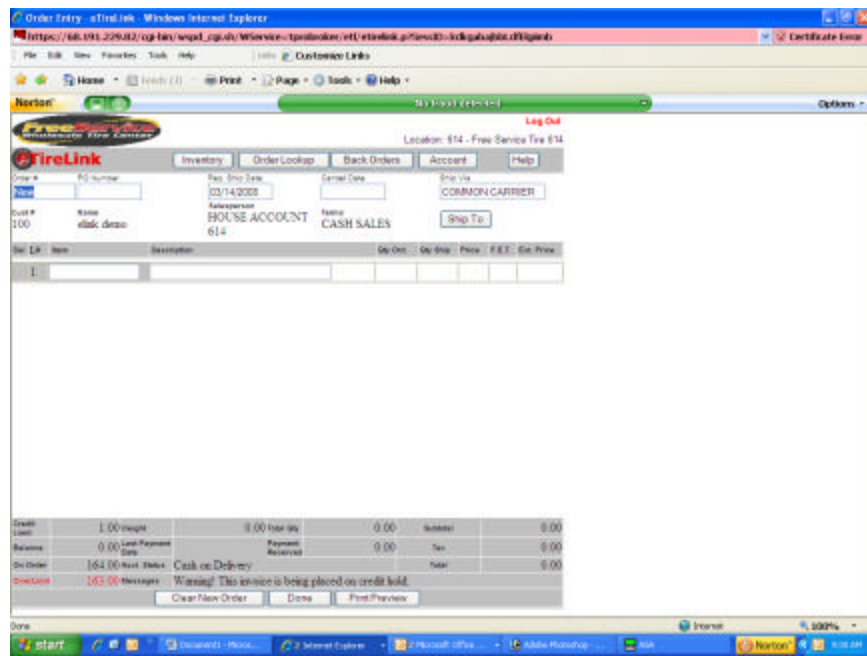
3. The user will have the ability to request which part of eTire appears when they login. They may choose from the Order Entry, Inventory Inquiry, or Order Inquiry page. This will have to be set on their password, it is not a change the user can make themselves.
4. Instead of a link to the login page of eTireLink, we will be able to incorporate the login page directly into our Free Service Tire website:





### Log In screen

Input your user name and password and click “**Log In**”. If you are unsure of your username or your password please contact your Area Sales Manager and they will get it for you.



**“Order Entry” screen.**

To quickly create an order you can type in an item # and qty in the **“item”** and **“qty ord”** field and click **“done”** and your order is created.

If you are unsure of the item # you can click the **“Inventory”** button and the **“Inventory”** window opens which allows you to search for tires by size

To view your backorders you can click on the **“BackOrders”** button and the **“Backorders”** window opens which allows you to view your backorders

To view your account details you can click on the **“Account”** button and the **“Account”** window opens which allows you to view your account balance, credit limit, recent invoices and recent payments.

Click on the **“help”** button for a list of E Tire Features and an explanation of each

Click on **“Logout”** to end your session. Always use the logout to leave E Tire Link. Account settings will not update unless you use the “logout” link to leave the site. If you leave the site by clicking on the X in the upper right corner your account will not update and you could get the wrong information.

The **“Ship To”** button is not used

The “**Clear New Order**” button clears anything that is in your shopping cart and lets you start a fresh order.

The “**Done**” button is used when you have items in your basket and you want to send your order, when you click done your order is printed at our warehouse and you will get the tires on your next delivery.

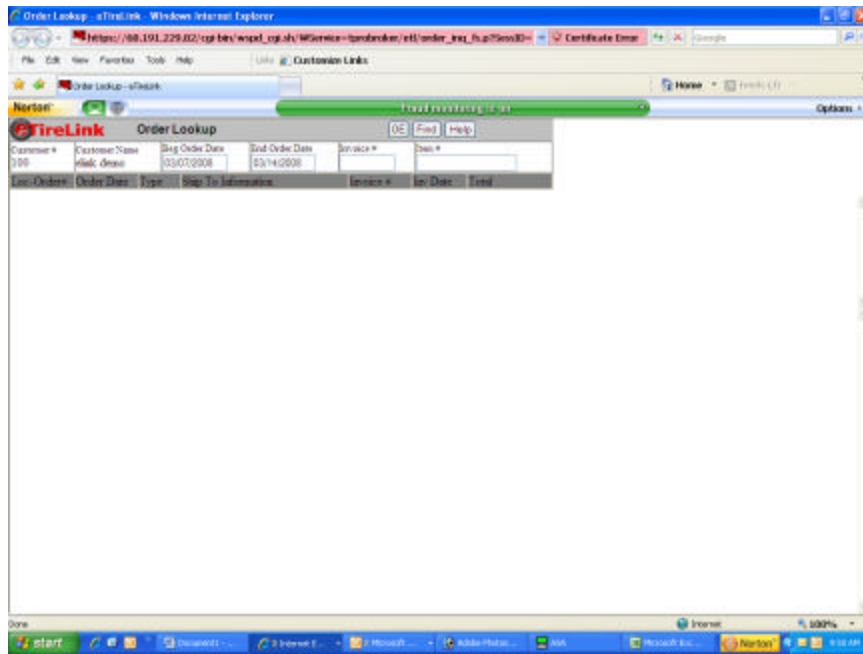
The “**Print Preview**” button allows you to view the order on your screen before you complete it.

Use the “**PO #**” field to put in a PO# which will appear on your invoice and on your statement to track your order



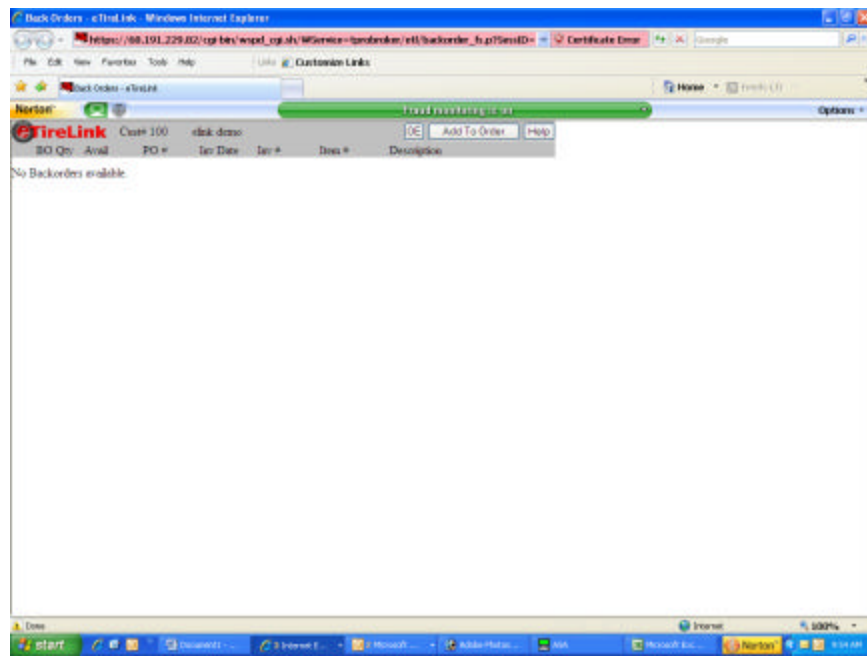
- ❖ You can hide your current cost by putting a check mark into the small checkbox near the top right corner of this screen. To show your price, uncheck this box.
- ❖ You can use E Tire Link to help you to calculate your selling price. E Tire Link will not, at this time, add a certain dollar amount to your tires but will add a percentage to your cost. If you want to make a 25% profit of your buying price you can type 25 into the field under the “%” sign and changing the drop down box beside of the % sign to “MU”. If you want to make 25% of your selling price change the “MU” to “GP”. “MU” calculates by taking your cost, finds 25% of your cost and adds it your buying price. “GP” takes your buying price and divides it buy the markup %. “GP” gives you a higher profit!!!
- ❖ E-tire offers you the ability to only search for tires by a certain manufacturer or by only a few manufacturers. Do this by typing in the size you are looking for in the Fast Find Box then type in the fstc name for the manufacturer you are looking for. You can also search for multiple manufacturers by putting in more than one manufacturer and separating them with commas. For example, if you want to search for all 235/75R15 Yokohama’s and Coopers you would type in 2357515 in the fast find box and yok,coo in the manufacturer (mfg) box. Below is a list of abbreviations used for each manufacturer.
  - BFGoodrich – bfg
  - Bridgestone – bri
  - Continental – con
  - Cooper – coo
  - Doral – doral
  - Falken – falk
  - Firestone – fir
  - General – Gen
  - Goodyear – gdy
  - Hankook – han
  - Michelin – mich
  - Milestar – mile
  - Miscellaneous Tires – Jet
  - Nankang – Nank
  - Pirelli – pir
  - ProComp – pro
  - Runway – rwy
  - Sumitomo – sum
  - Telstar – tel
  - Uniroyal – uni
  - YKS – yks
  - Yokohama – Yok





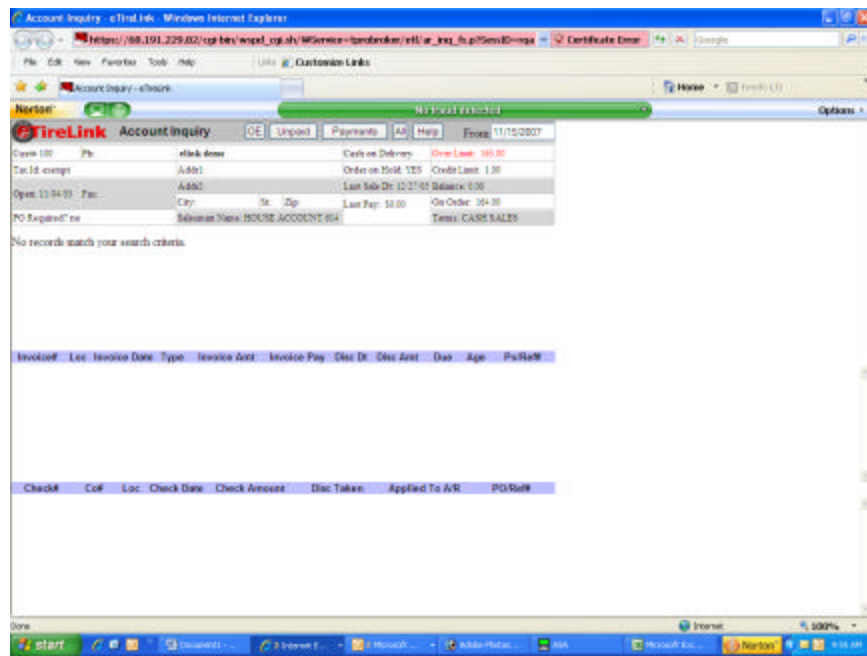
**“Order Lookup” screen**

This screen shows past orders. You can enter in a past invoice # to view that invoice information or you can enter in an item # to view your history on that item.



**“BackOrders” screen**

This screen shows the status of your backorders.



**“Account” screen**

From this screen you can view recent transactions, account balance, credit limit & unpaid invoices

## **E Tire Link things to remember**

When using E Tire Link there are a few things to keep in mind

- ❖ Always use the red “logout” button / link in the upper right corner when exiting the site.. This keeps your information up to date, the information is not refreshed if you close this page with the X and you could get misinformation.
- ❖ Usernames and Passwords are not multi-user, if your user name and password is logged in on a computer and someone uses that same user name and password on a different computer this will log of the person who was on first and they will get a message saying “Invalid Session Code”. If they log back in it will kick the other person off. Please let your Area Sales Manager know if you have a need for more than one user name and password.
- ❖ E Tire link uses the “Order Entry” screen as a sort of “home” page. You can get back to the “Order Entry” screen from any of the other windows by clicking the “OE” button. This takes you back to the “Order Entry” screen.
- ❖ To complete an order you have to click the “Done” button on the “Order Entry” screen. When you click done you will get verification that your order was created, if you don’t get this verification box your order was not created.

## **Placing An Order**

Quick Order sheet

If you want to order the lowest cost 205/60R15 we have in stock

- 1) Open your web browser
- 2) Go to [www.fswtire.com](http://www.fswtire.com)
- 3) Click on E Tire Link
- 4) Click on "Continue To This Website"
- 5) Type in your User name and password
- 6) Click "login"
- 7) If you do not have an existing order, the order entry screen comes up, if you do have an existing order a page comes up with the word new near the center of the screen and the when the next screen comes up click "accept". This brings you to the order entry screen.
- 8) On the order entry screen click the "inventory" button near the top left.
- 9) In the fast find field, type 2056015 (no spaces, slashes or dashes), press enter
- 10) This brings up all items in stock in a 205/60R15
- 11) To move the lowest price item to the top, click on the word "price".
- 12) Type 4 into the "order" field by the tire you want to order.
- 13) Click the "Add to Order" button
- 14) Click the "OE" button to return to the order entry screen
- 15) If you want to use a po enter it in the "PO" Field
- 16) Verify that the items in your basket are correct
- 17) Click "Done"
- 18) A box comes up showing "Order ???? Created"
- 19) Click "OK"
- 20) Click the "Inventory" button to go back to the inventory lookup screen.

User ID \_\_\_\_\_

Password \_\_\_\_\_

To log in to E Tire Link you have to have an assigned user name and password. If you haven't been issued or if you don't know your user name and password contact your Area Sales Manager and they will get you your id and password to you.