



BRAKE SERVICE



PROBLEM

- Brake fluid naturally absorbs water over time.
- Increased water content lowers the boiling point of brake fluid, resulting in a possible loss of braking under high temperature operation.
- Increased water content heightens the chance of corrosion and sludge deposits forming in the brake system.

SOLUTION

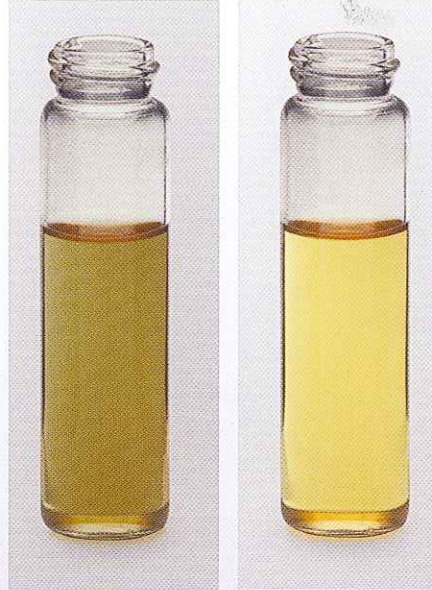
- Using a special brake fluid exchange machine, Wynn's Brake Fluid is delivered to the brake fluid reservoir.
- Simultaneously, the machine supplies vacuum to the bleed screws at all four wheels, ensuring a constant supply of new brake fluid and eliminating the chance of introducing air into the system.
- The machine provides a complete brake fluid exchange, while it eliminates any air that may be present in the brake system.

SERVICE RECOMMENDATION

Every 2 years or 30,000 miles.

FEATURES/BENEFITS

- Helps prevent rust and corrosion, extending brake component and brake system life.
- Compatible with conventional and ABS brake systems.
- Helps ensure the safe operation of the brake system, under normal operating conditions.



It's hard to tell the difference between safe (right) and unsafe (left) brake fluid, which is why OEM service intervals must be carefully followed.

EQUIPMENT

- Wynn's BrakeTech™ Rapid Brake Fluid Exchange Machine



PRODUCTS

- Wynn's DOT 3 and DOT 4 Brake Fluid (depending on vehicle type)

