

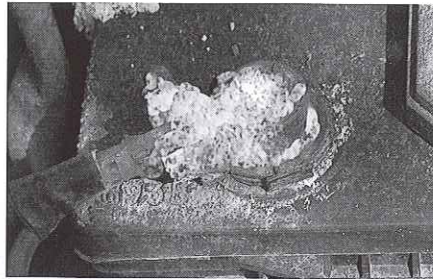


BATTERY SERVICE



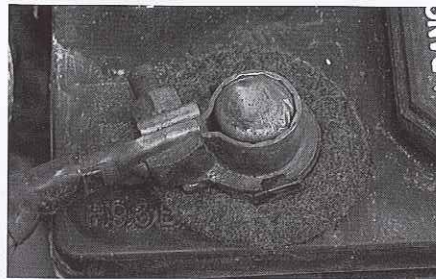
PROBLEM

- Batteries and battery terminals require periodic inspection and maintenance.
- Corrosion tends to buildup on battery terminals and connectors over time, reducing effectiveness.
- To ensure an uninterrupted power supply to electrically powered components, battery connections must be clean.



SOLUTION

- Wynn's *Battery Terminal Cleaner & Leak Detector* is applied to battery terminals and connections, to clean off any existing corrosion. The solution also contains a dye that turns pink when exposed to acid, indicating an acid leak.
- A Wynn's *Battery Terminal Protector Pad*, used to protect against future corrosion, is installed on each battery terminal.



Corrosion buildup (top) can reduce the effectiveness and shorten the life of a new battery.

FEATURES/BENEFITS

- Ensures an uninterrupted power supply.
- Helps extend the useful life of the battery and all connections.
- Wynn's *Battery Terminal Cleaner & Leak Detector* is not harmful to vehicle finishes, and it washes off with water.

PRODUCTS

- Wynn's *Battery Terminal Cleaner & Leak Detector*
- Wynn's *Battery Terminal Protector Pads*

