

POWER SUPPORT SURFACE

Masonair™

LS•9000B

**Bariatric Low Air Loss/
Alternating Pressure Mattress System**



Mason Medical Products

Division of MRC Industries, Inc.

Tel: 800/233-4454 • 516/328-6900 • Fax: 516/328-6622

www.masonmedical.com

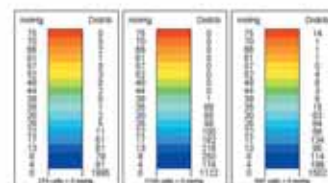
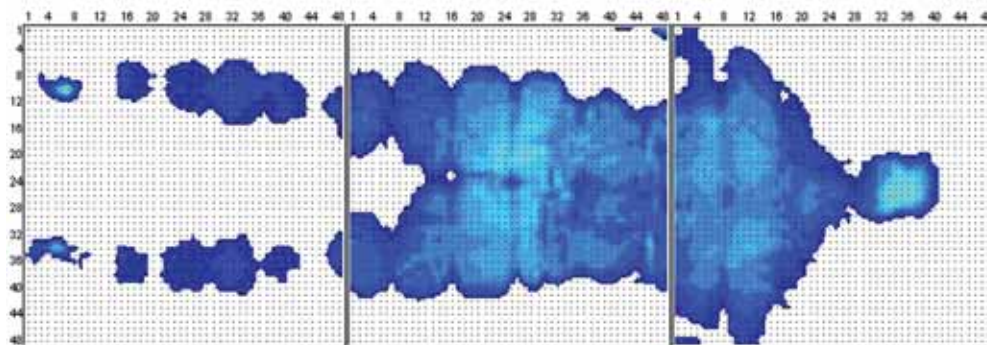
MASONAIR™ LS9000B BARIATRIC LOW AIR LOSS SUPPORT SURFACE WITH ALTERNATING PRESSURE

The Masonair™ LS9000B Bariatric low air loss with alternating pressure mattress is the most advanced system in the Masonair™ series. The high flow multi function air control unit will support up to 1000lbs. The microprocessor sensor technology provides continuous feedback to equalize pressure and maximize patient comfort. The mattress consists of (20 interchangeable) 10" high air cells, encapsulated by a removable waterproof zippered quilted top cover. The top cover is fire retardant, non shear, low friction, anti-microbial and anti-bacterial. In case of a power failure, the patented cell-in-cell design allows the inner cells to remain inflated via a one way valve. The inner cells will provide sufficient support for up to 48 hours.

FEATURES

- Low air loss & alternating pressure therapies in one unit.
- 1000lb weight capacity.
- High air flow dual function control unit.
- Cell-in-cell design in case of power failure.
- Static function can suspend alternating mode (has auto recovery function).
- Micro processor pressure sensing technology to produce low pressure support.
- 6 adjustable comfort levels.
- Alternating cycle times 5/10/15/20 minute.
- Audible and visual low pressure alarms.
- Pump functions: alternating/static/auto firm/seat inflate.
- Vapor permeable, waterproof and fire retardant top cover.
- Non-skid bottom cover.
- Transport mode with easy to use cap.
- CPR deflation in 20 seconds.
- 15 month warranty
- Mattress dimensions : 42"x80"x10"; 48"x80"x10"
- Pump dimensions : 14.4"x10.5"x5.0"
- Voltage range : AC100-120V
- Frequency range : 50/60Hz

Interface Pressure Readings



CLINICAL STUDIES

PERFORMED BY INDEPENDENT CERTIFIED TESTING COMPANY

- Limited warranty
- Protected by \$5,000,000 in Product Liability Insurance



Mason Medical Products

Division of MRC Industries, Inc.

- # LS9000B-42, 48 Masonair LS9000B Bariatric Mattress System 42" & 48"
- # LS9120B Powerloft Pro LAL900 Pump (only)
- # LS9125B-42, 48 42" & 48" Mattress and Cover Assembly (only)
- # LS9140B-42, 48 42" & 48" Replacement Mattress and Cover (only)

Tel: 800/233-4454 • 516/328-6900 • Fax: 516/328-6922