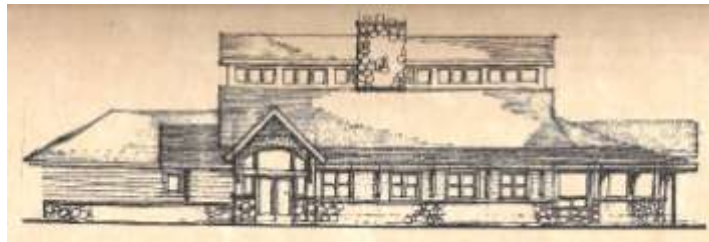


Explorer's Point Restaurant & Bar

**Banquets, Business Meetings,
Corporate Dinners,
& Private Parties**



Explorer's Point Restaurant & Bar
30580 West US Highway 2
Ashland, Wisconsin 54806
Phone: (715) 682-0331
Email: explorerspoint@charterinternet.com
www.explorerspoint.com

PRIVATE FUNCTION INFORMATION

1. Menu selections must be made in advance. If more than one selection is desired, accommodations will be made provided the following:
 - Up to four (4) selections are chosen
 - An approximate guest count and meal choice(s) are provided to this facility two weeks prior to the event, and a guaranteed count of each 72 hours prior
 - For plated meals, entrée choices will be color coded: Red for Beef, Yellow for Poultry, Blue for Seafood, and Green for Other Selections. Colored tickets will be provided at the door.
1. The final bill will be based on the guaranteed count or actual number of people served, whichever is greater.
2. **Absolutely NO food, beverages, or liquor items** may be brought into or taken from the premise by guests, with the exception of traditional wedding cakes. (Health Department regulations prevent us from giving leftover food to guests to take from the premise.)
3. The customary 20% gratuity will be added on all food and beverages for sit down dinners, 15% gratuity for buffets, and the applicable sales tax will be added on all food, beverages, and gratuity charges. Groups who are tax exempt must provide their tax exempt I.D. number prior to the function.
4. Payment is due in full immediately following the event unless previously authorized by management.
5. All bars will close no later than standard bar time
6. All bands or DJs will stop playing by 1:00 a.m. CST.
7. Access to banquet or meeting rooms for decorating is based on availability before the schedule event. All functions will end no later than standard bar time.
8. Decorating of meeting rooms and banquet space is allowed only with the use of masking tape and light wire. **NO STAPLES, NAILS, or TACKS. NO CREPE PAPER ON THE TABLE COVERS.** If providing candles from a source other than this facility, please be sure there is no open flame and that they are in a stable holder. Client accepts liability in case of damage to banquet rooms. The restaurant reserves the right to charge an appropriate fee if there is any damage to the room or equipment provided (when applicable), or when any extra clean up is necessary.
9. The restaurant assumes no responsibility for damages or loss of equipment, merchandise or personal property left in any banquet and meeting rooms or any part of the hotel before, during, or after your function.
10. Prices are subject to change without notice, due to market conditions. We will confirm menu prices 72 hours prior to the event.

Banquets & Buffets

BANQUET BREAKFAST

BREAKFAST BUFFET:

- Chilled Juice – Fresh Fruit
- Scrambled Eggs
- American Fries
- Bacon or Sausage
- Muffins or Sweet Roll
- Buttered Toast
- Assorted Jams
- Coffee, Tea, or Milk

\$7.25 per person

HEARTY PLATED BREAKFAST:

- Fruit Juice
- Scrambled Eggs
- American Fries
- Bacon or Sausage
- Buttered Toast
- Assorted Jams
- Coffee, Tea, or Milk

\$6.95 per person

COFFEE BREAKS:

Coffee or Soda	\$1.75 per person
Coffee and Cookies	\$2.25 per person
Coffee and Rolls	\$3.95 per person
Coffee and Muffins or Doughnuts	\$3.95 per person

All banquets require a
72 hour guarantee.
5.5% Sales Tax and Gratuity
(20% plated meals, 15% buffet)
not included in prices.
There is no charge for our facilities.

WE ACCEPT THE FOLLOWING
FORMS OF PAYMENT:
Cash, Personal Check, Traveler's Check,
Visa, Mastercard, Discover,
American Express.
**Parties of 8 or more
may not have separate checks.**
Sorry for any inconvenience.

BUFFET LUNCHEON

Served 10 a.m. – 2 p.m.

CHEF PREPARED SANDWICH BUFFET:

Minimum 50 people

CHOICE OF TWO:

- Chicken Salad
- Corned Beef
- Egg Salad
- Ham
- Ham & Cheese
- Ham Salad
- Roast Beef
- Tuna Salad

INCLUDES THE FOLLOWING:

Potato Salad
Jell-o
Relish Tray
Coffee, Tea, Milk, or Soda

\$9.95 per person

COLD MEAT PLATTER:

Minimum 50 people

INCLUDES THE FOLLOWING:

- Ham
- Roast Beef
- Turkey
- Cheese
- Potato Salad
- Relish Tray
- Croissant or Rolls & Butter
- Coffee, Tea, Milk, or Soda

\$8.25 per person

\$11.85 per person with salad bar

All banquets require a
72 hour guarantee.
5.5% Sales Tax and Gratuity
(20% plated meals, 15% buffet)
not included in prices.

There is no charge for our facilities.

WE ACCEPT THE FOLLOWING
FORMS OF PAYMENT:
Cash, Personal Check, Traveler's Check,
Visa, Mastercard, Discover,
American Express.
**Parties of 8 or more
may not have separate checks.**
Sorry for any inconvenience.

BANQUET LUNCHEON

Minimum 50 people

Served 10 a.m. – 3 p.m.

BEEF SELECTIONS:

- Beef Stroganoff over Noodles
- Lasagna with Garlic Toast
- Roast Beef Dinner
- Salisbury Steak with Mushroom Gravy
- Spaghetti & Meatballs with Garlic Toast

\$7.95 per person

PORK, CHICKEN, AND SEAFOOD:

- Baked Stuffed Pork Chop
- Cod Marinara
- Croissant Stuffed with Chicken Salad
- Lemon Pepper Cod (5 oz.)
- Marinated Chicken Breast (6 oz.)
- Roast Turkey with Dressing & Gravy
- Trout or Whitefish

\$8.95 per person

All banquet luncheons served with choice of potato and vegetable except where rice or noodles are served. Dinner salads with choice of dressings, rolls, butter and non-alcoholic beverage are included.

SALAD SELECTIONS:

- Salad Bar with Soup

\$9.95 per person

- Stuffed Tomato with Chicken, Crab, or Tuna Salad
- Fruit Plate with choice of Cottage Cheese or Sherbet

\$8.95 per person

Salads selections served with rolls, butter, and non-alcoholic beverage.

CHEF'S SOUP & SANDWICH:

Cup of homemade soup, sandwich selection, French fries, pickle, and beverage

\$7.95 per person

COLD PLATE ASSORTMENT:

Variety of Cold Cuts, Cheese, Potato Salad, Relishes, Rolls, Butter, and non-alcoholic Beverage

\$8.25 per person

**WE ACCEPT THE FOLLOWING
FORMS OF PAYMENT:**

Cash, Personal Check, Traveler's Check,
Visa, Mastercard, Discover,
American Express.

**Parties of 8 or more
may not have separate checks.**

Sorry for any inconvenience.

All banquets require a
72 hour guarantee.

5.5% Sales Tax and Gratuity
(20% plated meals, 15% buffet)
not included in prices.

There is no charge for our facilities.

DINNER BUFFETS

Served from 11:00 a.m.

EXPLORER'S POINT:

Hot Buffet

Minimum 35 people

CHOICE OF TWO:

- Baked Fish
- Baked Ham
- BBQ Beef Ribs
- Fried Chicken
- Pork Roast
- Roast Beef
- Turkey & Dressing

INCLUDES THE FOLLOWING:

Vegetable
Potato or Rice Pilaf
Tossed Salad & Dressings
Soup
Assorted Rolls with Butter
Non-Alcoholic Beverage
\$15.95 per person

EXPLORER'S POINT DELUXE:

3 Meat Buffet

Minimum 35 people

CHOICE OF THREE:

- Baked Fish
- Baked Ham
- BBQ Beef Ribs
- Fried Chicken
- Pork Roast
- Roast Beef
- Turkey & Dressing

INCLUDES THE FOLLOWING:

Relish Tray
Cheese Tray
Jell-o
Vegetable
Potato or Rice Pilaf
Soup & Salad Bar
Assorted Rolls with Butter
Non-Alcoholic Beverage
\$19.95 per person

All banquets require a
72 hour guarantee.
5.5% Sales Tax and Gratuity
(20% plated meals, 15% buffet)
not included in prices.

There is no charge for our facilities.

WE ACCEPT THE FOLLOWING
FORMS OF PAYMENT:
Cash, Personal Check, Traveler's Check,
Visa, Mastercard, Discover,
American Express.
**Parties of 8 or more
may not have separate checks.**
Sorry for any inconvenience.

DINNERS (PLATED)

Served from 4 p.m.

25 People Minimum 2 Choices

50 People Minimum 4 Choices

Pre-selection required & confirmed 72hours prior to event.

- BBQ Ribs
- Chicken Teriyaki
- Steak & Fish
- Steak & Shrimp
- 8 oz. Sirloin Steak
- Breaded Shrimp

\$ Current Menu Price

*Above selections served with dinner salad with choice of dressing, bread, butter, and beverage.
Add soup & salad bar for \$3.59.*

- Stuffed Chicken Breast (Choose Broccoli & Cheese or Apple Raisin with Almonds)
- Baked Stuffed Pork Chop
- Roast Beef Dinner
- Marinated Chicken Breast
- Broasted Chicken
- Baked Ham with a Raisin Glaze

\$12.95 per person

*Above selections served with choice of potato and with dinner salad with choice of dressing,
dinner rolls with butter, and a non-alcoholic beverage. Add soup & salad bar for \$3.59.*

All banquets require a
72 hour guarantee.
5.5% Sales Tax and Gratuity
(20% plated meals, 15% buffet)
not included in prices.

There is no charge for our facilities.

WE ACCEPT THE FOLLOWING
FORMS OF PAYMENT:
Cash, Personal Check, Traveler's Check,
Visa, Mastercard, Discover,
American Express.
**Parties of 8 or more
may not have separate checks.**

ELEGANT WHITE LINEN SERVICE—

PERFECT FOR FORMAL EVENTS...A COMPLETELY SIT-DOWN AFFAIR

MAIN COURSES	All main courses are served with a dinner salad, chef's selection of seasonal vegetables, choice of one starch, bread basket and butter, and fresh brewed coffee (regular & decaffeinated) or tea.	
BEEF	BBQ Ribs (House Specialty!) ½ Rack of Dean's delicious, fall-off-the-bone Ribs smothered in his famous homemade zesty BBQ Sauce.	\$16.95
	Filet Mignon Beef Tenderloin served with fresh sautéed Mushrooms	\$31.95
	Prime Rib of Beef Slow roasted tender Prime Rib served with Au Jus (Minimum 15 people)	\$22.95
	Ribeye A succulent grilled 12 oz cut cooked to your liking	\$26.95
	Top Sirloin Grilled and served with a Blackberry Merlot Sauce	\$21.95
CHICKEN	Champagne Chicken Breast Boneless Breast of Chicken served with a Champagne Cream Sauce	\$20.95
	Chicken Marsala Sautéed Breast of Chicken with fresh Mushrooms, Shallots, and Marsala Wine	\$20.95
	Rosemary Chicken ½ Juicy Bone-in Chicken lightly seasoned with Rosemary	\$17.95
COMBO	Sirloin & Shrimp 6 oz. succulent Black Angus Steak & 5 deep fried or broiled Shrimp	\$26.95
FISH	Baked Whitefish Lake Superior mild Whitefish seasoned with fresh Dill. Served with homemade Tartar Sauce	\$21.95
	Atlantic Salmon Tender baked Salmon Steak served with Maltese Sauce on the side	\$21.95
	Walleye Pike Almondine	\$23.95

Tender Baked Fillet of Walleye, Lemon and White Wine, Toasted Almonds

PORK

Pork Tenderloin **\$20.95**
Center cut Pork Loin delicately wrapped in Bacon

Stuffed Pork Chop **\$18.95**
Seared bone-in Pork Chop, Sage Stuffing topped with rich Pan Gravy

VEGETARIAN

Pasta Primavera **\$15.95**
Fettuccini with seasonal sautéed Vegetables and creamy Alfredo Sauce

STARCH OPTIONS

CHOOSE ONE OF THE FOLLOWING:

- Baked Potato with Butter & Sour Cream
- Garlic Mashed Potatoes
- Roasted Baby Red Potatoes
- Wild Rice Pilaf

All entrees include our signature Red Raspberry Crème dessert.
We have many wonderful wine selections to compliment any entrée.

All banquets require a
72 hour guarantee.
5.5% Sales Tax and Gratuity
(20% plated meals, 15% buffet)
not included in prices.

There is no charge for our facilities.

WE ACCEPT THE FOLLOWING
FORMS OF PAYMENT:
Cash, Personal Check, Traveler's Check,
Visa, Mastercard, Discover,
American Express.
**Parties of 8 or more
may not have separate checks.**
Sorry for any inconvenience.

HORS D'OEUVRES

25 People Minimum

OTHER QUANTITY PRICED SELECTIONS:

·Coffee or Tea	\$1.75 each (free refills)
·Fruit Punch	\$8.00/gallon
·Mixed Nuts	\$15.00/pound
·Pickled Herring	\$9.00/pound

TRAYS (Serves 25 People):

·Assorted Meats & Cheese Platter	\$65.00
·Assorted Vegetables with Dip	\$50.00
·Cheese & Crackers	\$35.00
·Fresh Watermelon Display (Seasonal)	\$55.00

SALADS (Serves 25 People):

·Cole Slaw	\$55.00
·Large Shell Pasta	\$70.00
·Marinated Mushrooms	\$70.00
·Potato Salad	\$55.00

**WE ACCEPT THE FOLLOWING
FORMS OF PAYMENT:**

Cash, Personal Check, Traveler's Check,
Visa, Mastercard, Discover,
American Express.

**Parties of 8 or more
may not have separate checks.**

Sorry for any inconvenience.

All banquets require a
72 hour guarantee.
5.5% Sales Tax and Gratuity
(20% plated meals, 15% buffet)
not included in prices.

There is no charge for our facilities.

**Ashland Area
Event Service
Directory**

CAKES:

- Wal-Mart
Ashland (715) 682-9699
- Gourmet Garage
Bayfield (715) 779-5365
- County Market
Ashland (715) 682-8475
- Ashland Baking Company
(715) 682-6010
- Washburn IGA
(715) 373-5566

CHURCHES:

- Bayfield Presbyterian Church
Bayfield (715) 779-5603
- Bethesda Lutheran Church
Bayfield (715) 779-5611
- Christ Episcopal Church
Bayfield (715) 779-3401
- Faith Baptist Church
Bayfield (715) 779-5855
- First Assembly Of God Church
Ashland (715) 682-4973
- Holy Family Church
Bayfield (715) 779-3316
- Calem Baptist Church
Ashland (715) 682-3934
- Our Lady of The Lake
Ashland (715) 682-7620

- St. Francis Church
Red Cliff Reservation (715) 779-3316
- St. Joseph's Church
Madeline Island (715) 779-3316
- United Presbyterian
Ashland (715) 682-3139

MARRIAGE LICENSES:

- Ashland County Court House
Ashland, WI (715) 682-7000
- Bayfield County Courthouse
Washburn, WI (715) 373-6100

OFFICIANTS:

- Bloomquist, John
(Services must be held on the water)
Bayfield (715) 779-5124
- Lee, Jan
Washburn (715) 373-1153
- Phillips, Jerry
The Old Rittenhouse Inn
Bayfield (888) 644-4667
- Strzok, Dave
Bayfield (715) 779-3925
- Thompson, Gregg
Gregg Thompson Photography
Bayfield (866) 656-5919

TENT/CHAIR RENTAL:

- True North Tent & Party Rental
(Ashland) (715) 682-3438

FLORISTS:

- Ashland Floral
(715) 682-6615
- Blue Vista Farm
Bayfield (715) 779-5400
- Freehands Farm
Ashland (715) 682-3596
- Good Earth Gardens (dried flowers)
Bayfield (715) 779-5564
- Hauser's Superior View Farm
Bayfield (715) 779-5404
- Heike's Blumen Garden
Ashland (715) 682-0296
- Johnson Flower Shop
Ashland (715) 682-2404
- Silver Sage Farm & Flowers
(800) 860-0067
Herbster (715) 774-3572
- Whittlesey Creek Farm
Washburn (715) 373-5109

HAIR STYLISTS, TANNING, & NAILS:

- Carol's Hair Salon
Washburn (715) 373-0914
- Escape By The Lake
Ashland (715) 682-4455
- Hair Affair
Ashland (715) 682-9707
- Holly's Hair-Itage
Ashland (715) 682-8887

- Scissor's Edge Hair Salon (Hair & Nails)
Ashland (715) 682-4003
- Shear Country Beauty Salon
Washburn (715) 373-5270
- Shear Style (Hair & Nails)
Ashland (715) 682-8850
- Styl'n Up North
Ashland (715) 685-0747
- Superior Hair & Tanning Salon
Ashland (715) 682-3239
- Upper Cut (Hair, Nails, & Tanning)
Ashland (715) 682-4224
- Chequamegon Health & Fitness (Tanning)
Ashland (715) 682-8590
- Superior Tan
Ashland (715) 682-4437

MASSAGE THERAPY:

- Colene Lee, Massage Therapist
Washburn (715) 373-0697
- Integrative Therapeutic Massage
Bayfield (715) 779-5004
- Movement Matters
Ashland Area (715) 209-2305
- Same Spirit Healing Arts
Bayfield (715) 779-9590

MASSAGES & DAY SPAS:

- Superior Body Massage & Spa
Bayfield (715) 209-0428

- Escape By the Lake
Ashland (715) 682-4455
- Perfect Touch Therapeutic Massage

Washburn & Ashland (715) 373-5836

- Seeds of Well Being Massage Ashland
Ashland (715) 682-0209

MUSIC:

- Bayfield Artists' Guild
(715) 779-5345
- Bayfield Music Company
(715) 209-7954
- Big Top Chautauqua
Bayfield (715) 373-5552
- Chequamegon Bay Arts Council
Washburn (715) 373-2943
- Encore Chamber Ensembles
Ashland (715) 682-3272
- Harmony School of Music
Washburn (715) 373-5044
- Sounds Unlimited Wedding DJ
(800) 977-4248
- Summit DJ
Ashland (715) 682-2750

TRANSPORTATION:

- BART (Bay Area Rural Transit)
Ashland Area (715) 682-9664
- Bay Area Taxi
Ashland (715) 682-4588
- Bay Area Limousine and Van Service
Ashland (715) 682-4588
- Elite Limousine
Bayfield (715) 779-5560
- Northwoods Sleigh & Carriage
Ashland (715) 682-4963

PHOTOGRAPHY & VIDEOGRAPHY:

- Gregg Thompson Photography
Bayfield (866) 656-5919
- David Kennedy Photojournalism
Ashland (715) 682-2599
- Northern Photographics
Ashland (715) 682-9670
- Riverstone Photography
Bayfield (715) 779-9504
- Stonehouse Photography
Bayfield (715) 779-5833
- Zakis Aivars Photography
Mason (715) 765-4427
- Elite Video Services
Bayfield (715) 779-5560

WEDDING PLANNERS:

- All Occasions, Inc.
Contact: Diane Miskulin Ashland
(715) 746-2401
- The Old Rittenhouse Inn
Contact: Wendy Phillips (800) 779-2129
- The Bayfield Inn
Contact: Ron Madich (800) 382-0995
- The Pub Restaurant on Madeline Island
Contact: Kathleen Nelson (800) 822-6315
- Big Picture Events
Contact: Jennifer Fanucci (715) 209-8036

WEDDING SITES:

·Apostle Islands Cruise Service*
(Cruise Capacity 80-149)
Bayfield (800) 323-7619

·Bailey's Greenhouse
Bayfield (715) 779-3395

·Freehands Farm
Ashland (715) 682-3596

·Friends of the Earth
Washburn (715) 373-5044

·Good Earth Gardens
Bayfield (715) 779-5564

·Apostle Highlands Golf Course*
(Capacity 32)
Bayfield (715) 779-5960

·Chequamegon Bay Golf Club
Ashland (715)682-8004

·Pike's Bay Marina*
(Capacity 75-150)
Bayfield (715) 779-3900

·Port Superior Marina*
(Capacity 75-100)
Bayfield (715) 779-5360

·Roy's Point Marina*
(Capacity 60-70)
Bayfield (715) 779-5025

·Superior Charters
Bayfield (715) 779-5124

·Little Sand Bay Park *
Bayfield (715) 779-5338

·Memorial Park*
Contact: Civic League for Reservations
Bayfield (715) 779-3303

·Prentice Park, Maslowski Beach, Kreher
Park, Bayview Beach*
Contact City of Ashland Parks & Rec.
Ashland (715) 682-7184

Best Western Lake Superior Lodge*
Ashland, Wisconsin
Next Door to Explorer's Point Restaurant &
Blue Heron Bar
*Gorgeous Outdoor Lakeside Courtyard on
Chequamegon Bay...*
*Perfect for Weddings, Reunions,
and Other Special Occasions!*
BRIDE & GROOM STAY FREE!
*Complimentary Champagne & Chocolate
Covered Strawberries*
(715) 682-5235 or 1-800-452-7749

***Indicates Outdoor/Water Sites**

**Explorer's Point Restaurant
& Blue Heron Bar
Ashland, Wisconsin**
Next Door to Best Western Lake Superior
Lodge & Lake Rock Café
*30 Foot Wall of Windows
3-Way Fireplace
Full Bar*
*Extensive Banquet & Wine Menus
Small & Large Groups Welcome*
Save The Date Today ! (715) 682-0331

