

LEV® Home Elevator

The Next Level.

Available in counterweighted chain drive and hydraulic drive



ThyssenKrupp Access

Residential Elevator Division



ThyssenKrupp



LEV[®]

The Next Level.™



The first choice for your new home.

Are you building or thinking about building your new multi-story home? Then you should consider the advantages of including the LEV home elevator.

The LEV is the first home elevator designed for the needs of new home construction — so it fits into nearly all new home designs. Multi-story luxury home? Ranch style with a basement? Or a multi-story condo or townhome? The LEV is the right choice for any of them. Including your home.

Our elevator engineers took a “clean-sheet-of-paper” approach to home elevators with the LEV. And it shows.

They gave it greater lifting capacity and more standard features than other home elevators. They made it available in your choice of either a hydraulic or counterweighted chain drive system.

They made it easy to manufacture and install. Meaning you won't have to endure months of waiting for your elevator. Plus it can be installed just about any time during construction phase.

And they delivered all of this for thousands of dollars less than comparable home elevators from other manufacturers.

Introducing

The LEV Signet custom home elevator.

Go to www.thelev.com to see how you can upgrade your LEV to the luxurious Signet. The LEV Signet offers the same cutting-edge LEV technology with a nearly endless list of car finishes including glass, marble, exotic woods and designer metals.

 **SIGNET**

Overview

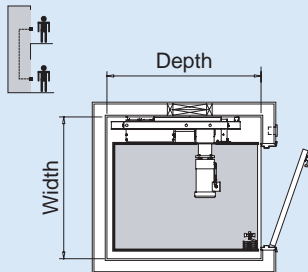
Typical LEV® hoistway sizes and car configurations

Cab Type

Standard gate shown
(rail side at top in all shown illus.)

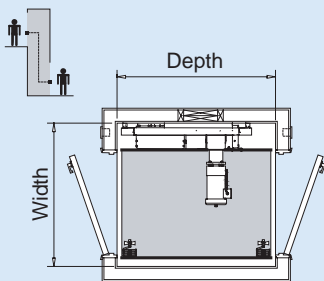
Car Size	Width*		Depth	Clear Opening
	rail side gate stack	opp. side gate stack		

Type 1—Enter/Exit Same Side



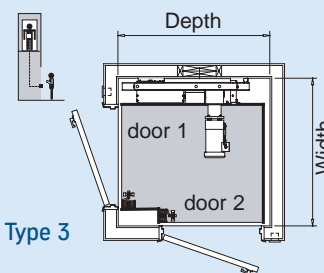
Standard gate				
36 x 48	50 1/2" *		55"	28 5/8"
36 x 60	50 1/2" *		67"	28 5/8"
40 x 54	54 1/2" *		61"	32 1/8"
Optional pocket gate				
36 x 48	50 1/2" *	54" *	55"	32 1/8"
36 x 60	50 1/2" *	54" *	67"	32 1/8"
40 x 54	54 1/2" *	58" *	61"	35 7/8"

Type 2—Enter/Exit Straight-Thru

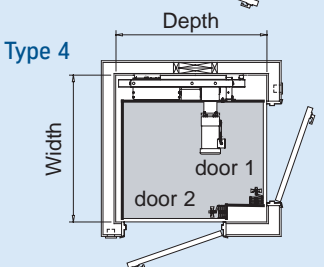


Standard gate				
36 x 48	50 1/2" *		55 1/2"	28 5/8"
36 x 60	50 1/2" *		67 1/2"	28 5/8"
40 x 54	54 1/2" *		61 1/2"	32 5/8"
Optional pocket gate				
36 x 48	50 1/2" *	54" *	55 1/2"	32 1/8"
36 x 60	50 1/2" *	54" *	67 1/2"	32 1/8"
40 x 54	54 1/2" *	58" *	61 1/2"	35 7/8"

Types 3, 4—Enter/Exit 90°



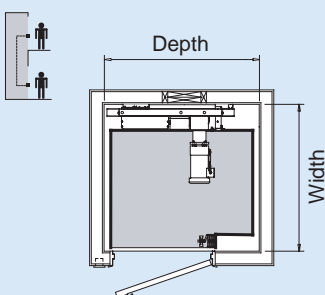
Type 3



Type 4

Standard gate				
36 x 48	52 1/8" *		55"	28 5/8"
36 x 60	52 1/8" *		67"	28 5/8"
40 x 54	56 1/8" *		61"	32 1/8"
Optional pocket gate (door 1 - pocket, door 2 - standard)				
36 x 48	52 1/8" *	n/a	55"	door 1, 32 1/8", door 2, 28 5/8"
36 x 60	52 1/8" *	n/a	67"	door 1, 32 1/8", door 2, 32 1/8"
40 x 54	56 1/8" *	n/a	61"	door 1, 35 1/8", door 2, 32 1/8"

Type 5—Enter/Exit Adjacent Side



Standard gate				
36 x 48	52 1/8" *		55"	32 1/8"
36 x 60	52 1/8" *		67"	32 1/8"
40 x 54	56 1/8" *		61"	32 1/8"
No pocket gate option available on Type 5				

*Add 3 1/2" to hoistway width for hydraulic drive.
Pocket gate comes standard on the LEV Signet.

- Comes complete with:
 - Accordion car gate(s)
 - Two recessed halogen car lights
 - Wood handrail
 - Plywood floor
 - Car operating panel and hall stations
 - Emergency stop switch
 - Automatic car lighting
 - Digital floor position indicator
- Five car configurations
- Three car sizes:
 - 36" x 48", 36" x 60", 40" x 54"
 - (also available in 2" increments from 12 ft² to 15 ft². For applications other than this, consult factory. Local codes may require variances on non-standard cab sizes)
- Three car heights:
 - 84", 88", 94"
- Four car packages to choose from:
 - Melamine car
 - Wood veneer car
 - Raised panel hardwood car
 - Inset wood panel car
- Travel up to 50 feet — providing basement to top story access with service up to five stops.
- Space miser:
 - Low overhead clearance and pit requirements conserve valuable living area in your home.
 - Perfect for coastal and flood plain areas
 - Counterweight chain drive system does not require a machine room
 - Hydraulic drive system allows machine room to be located up to 25' from hoistway.
- SoftStart and SoftStop technology ensures that when the lift begins to move or comes to a stop automatically at the landing, it will do so gently.
- The Programmable Logic Controller (PLC) monitors the elevator's performance to notice potential problems before they occur.
- Machine drive delivers up to 950 lb. lifting capacity.
- Uninterruptible power supply and floor selectable battery lowering are standard.
- ETL listed components give you peace of mind that your elevator will perform reliably.
- Equipped with standard safety devices: hoistway door interlocks, a slack chain/rope safety to stop and hold the elevator car, and an emergency light and alarm.
- Standard 2 year warranty covers your LEV against defects in workmanship.

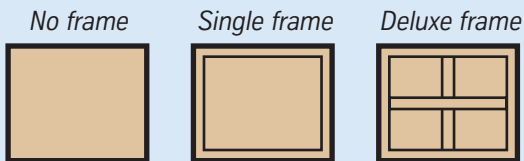


Oak inset wood panel

Elevator Car

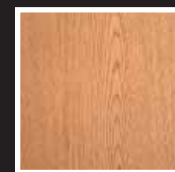
Even when you're traveling floor to floor, you can enjoy a custom look and feel. The LEV home elevator car comes in a wide variety of standard features and options.

- Car walls are available in either melamine, wood veneer, raised panel hardwood or inset wood panels.
- Two recessed halogen lights come standard. Or choose our four light option.
- Even the ceiling is customizable. White melamine is standard. If you choose any of the wood options for your car walls, you can match it on your ceiling. Flat ceiling not fancy enough? Try one of the framing options shown below.



Light oak melamine

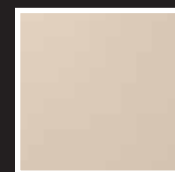
Car paneling options



Light oak



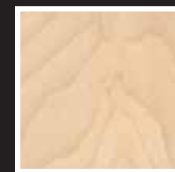
Dark oak



Champagne

Standard melamine:

light oak, dark oak, champagne, white (not pictured)



Birch



Oak



Cherry

Optional wood

(shown unfinished)
Wood veneer, raised hardwood and inset panels available in birch, oak, cherry.

Birch wood veneer



Solid cherry hardwood raised panel



Protect your investment with a factory finish. Select a varnish or any Minwax® Wood Finish™.

Options to finish your LEV.

A perfect blend of beauty and function.

Accordion gates

Car gates provide security while the elevator is traveling. It neatly folds out of the way for easy entry and exit.

Accordion car gate standard color choices: white, chalk, champagne, light or dark oak panels.

For a unique look, substitute an accordion car gate with clear vision panels. Or you can choose a solid or perforated aluminum accordion car gate in a clear coat or brass finish.

Add an auto gate operator for "hands free" convenience. It slides the gate open and closed at each landing. And for your safety, it will auto-reverse if the light beam safety curtain senses an obstruction. Auto opener for hoistway door is also available.

Hall stations and operating controls available in four finishes



Brushed stainless steel

Polished stainless steel

Brushed brass

Polished brass

Light oak

Dark oak

Chalk

Champagne

White (shown with optional 3 clear vision panels)



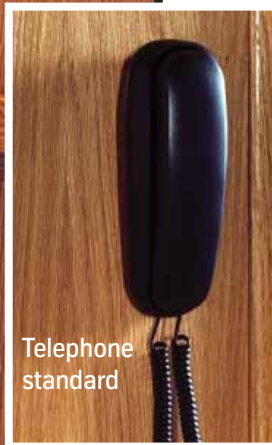
Handrails

Standard wooden handrail can be replaced with metal handrail in choice of stainless steel or brass finish.



Inside operating controls

(includes digital floor position indicator. Recessed telephone box optional.)



Telephone standard

Optional solid aluminum
(also available in brass finish)

Optional perforated aluminum
(also available in brass finish)



Melamine handrails

Light oak



Champagne



White



Dark oak



Wood handrails (shown unfinished)

Birch



Cherry



Oak



Metal handrails

(not available with melamine wall panels)

Brushed stainless steel



Polished stainless steel



Brushed brass



Polished brass



The LEV home elevator, has been specifically designed and built to conform with the requirements of ASME A17.1, Part V, Section 5.3 standard for residential elevators in private dwellings.

Features:

General:

- Speed: 40 fpm (.20ms)
- Minimum pit depth: 6"
- Maximum number of stops: 5 (minimum 17" travel between stops)

Mechanical Equipment:

- Modular Dual 6 1/4 lb. T-rail system

Car and Appointments:

- 36" x 48" (12 ft²) x 84" high car size
- Melamine wall panels in choice of champagne, light oak, dark oak or white
- White ceiling
- Two recessed halogen lights
- Wooden handrail to match wall panels
- Accordion car gate in choice of champagne, chalk, light oak, dark oak or white
- Unfinished plywood floor (with removable insert for 3/4" thick finished floor by others)
- Telephone

Controls:

- Programmable Logic Controller (PLC) with digital signal processor
- Fully automatic operation
- Car operating panel and hall stations (brushed stainless steel or brass) with LED floor position/diagnostic display and call acknowledgment
- Automatic car lighting with constant on switch
- Automatic homing to a designated floor
- Bi-directional leveling
- Emergency stop switch
- Emergency alarm button
- Hoistway wiring with conduit (hall stations/interlocks)
- Uninterruptible power supply (UPS) for lowering and automatic gate operation (if supplied) in case of a power failure

Safety Devices:

- Lockable auxiliary disconnect for car lighting circuit
- Lockable auxiliary disconnect for drive unit circuit
- Upper and lower terminal limits
- Final limits
- Pit switch and car top stop switch
- Battery backup emergency light and alarm
- Car gate safety switch
- Electromechanical interlocks (for doors by others)

Options:

- 36" x 60" (15 ft²) or 40" x 54" (15 ft²) car sizes
- Special car size: 12 ft² to 15 ft², available in 2" increments. For applications that require less than 12 ft² or more than 15 ft², consult factory with specific measurement and application details. (local codes may require variances on non-standard cab sizes)
- 88" or 94" inside car heights (requires additional overhead space)
- Unfinished wood veneer panels (oak, cherry or birch)
- Unfinished inset wood veneer panel walls (oak, cherry or birch)
- Factory applied finish to wood veneer panels and handrail
- Raised wood panel walls (oak, cherry or birch) with choice of finish.
- Recessed telephone cabinet (brushed stainless steel or brass, or polished stainless steel or brass)
- Matching wood veneer ceiling panel*
- Hall stations and car operating panel in polished stainless steel or brass
- Metal handrail* (brushed stainless steel or brass, or polished stainless steel or brass)
- Automatic car gate operator with light beam safety curtain
- Automatic hoistway door operator
- GAL Type 'N' interlocks (requires additional hoistway space)
- Buffer springs (requires 12" deep pit min.)

Car Gate Upgrades:

- Accordion car gate with 3 clear vision panels
- Accordion car gate with all clear vision panels
- Solid aluminum or perforated aluminum accordion car gate in clear coat finish or brass finish
- Deluxe Visifold® car gate
- Pocket gate (not available with Type 5 car)

Control Upgrades:

- Key switch controls in car operating panel and/or hall stations

*Not available with melamine wall panels.

Counterweighted chain drive specific features:

General:

- Rated load: 950 lbs. (430 kg) (750 and 700 lbs. available)
- Maximum travel: 50'
- Minimum overhead clearance: 9'-0"

Mechanical Equipment:

- 230 VAC, 60 Hz, 20 amp single phase power supply with neutral and ground (4 wires)
- Two #60 roller chains
- Frequency controlled variable speed geared machine with counterweighted chain drive, 2 hp motor

Safety Devices:

- Slack chain safety device

Options:

- Remote located elevator controller
- Counterweight safety device

Hydraulic-specific features:

General:

- Rated load: 750 lbs. (340 kg) (700 and 950 lbs. available)
- Maximum travel: 40'
- Minimum overhead clearance: 8' (w/remote controller), 8'-6" (w/o remote controller)

Mechanical Equipment:

- 230 VAC, 60 Hz, 30 amp single phase power supply with neutral and ground (4 wires)
- Two 3/8" x 7 x 19 aircraft wire ropes
- Forged rope sockets
- 2.5 hp submersed motor with two speed valve assembly

Safety Devices:

- Slack rope safety device w/manual reset switch
- Anti-creep device
- Minimum pressure switch
- Pump run timer

Options:

- Tank heater
- Two piece hydraulic jack

Specifications and/or colors subject to change without notice.

Visit our web site at www.tkaccess.com for more information including complete 3-part specifications, CAD details, and typical drawings.

Manufactured in USA since 1947.

